

For Research Use Only

Asprosin Polyclonal antibody, PBS Only

Catalog Number: 20251-1-PBS



Basic Information

Catalog Number:

20251-1-PBS

Size:

100ug, Concentration: 1 mg/ml by Nanodrop;

Source:

Rabbit

Isotype:

IgG

GenBank Accession Number:

NM_000138

GeneID (NCBI):

2200

UNIPROT ID:

P35555

Full Name:

fibrillin 1

Calculated MW:

30 kDa

Observed MW:

32 kDa

Purification Method:

Antigen affinity purification

Applications

Tested Applications:

WB, IHC, Indirect ELISA

Species Specificity:

human, mouse

Background Information

Asprosin is a hormone derived from fibrillin-1 that plays a role in regulating glucose metabolism and appetite. It's released by adipose tissue during fasting and stimulates the liver to release glucose into the bloodstream, ensuring energy availability. Asprosin also influences appetite and body weight by acting on neurons in the hypothalamus. It has been linked to various metabolic diseases, including obesity, type 2 diabetes, and polycystic ovary syndrome (PCOS). The detected molecular size is consistent with that in the article PMID: 35079041.

Storage

Storage:

Store at -80°C.

Storage Buffer:

PBS only, pH7.3

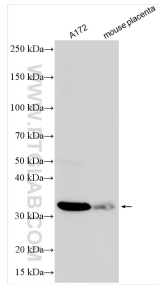
For technical support and original validation data for this product please contact:

T: 1 (888) 4PTGLAB (1-888-478-4522) (toll free in USA), or 1(312) 455-8498 (outside USA)

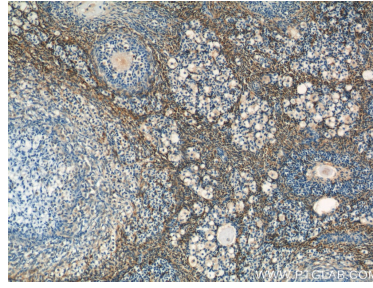
E: proteintech@ptglab.com
W: ptglab.com

This product is exclusively available under Proteintech Group brand and is not available to purchase from any other manufacturer.

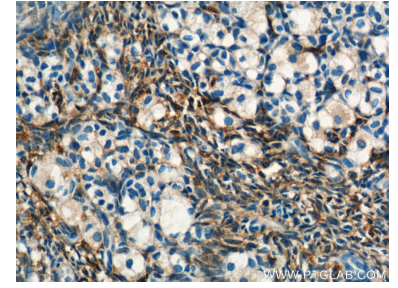
Selected Validation Data



Various lysates were subjected to SDS PAGE followed by western blot with 20251-1-AP (Asprosin antibody) at dilution of 1:300 incubated at room temperature for 1.5 hours. This data was developed using the same antibody clone with 20251-1-PBS in a different storage buffer formulation.



Immunohistochemical analysis of paraffin-embedded human ovary tissue slide using 20251-1-AP (FBN1-Specific Antibody) at dilution of 1:50 (under 10x lens). This data was developed using the same antibody clone with 20251-1-PBS in a different storage buffer formulation.



Immunohistochemical analysis of paraffin-embedded human ovary tissue slide using 20251-1-AP (FBN1-Specific Antibody) at dilution of 1:50 (under 40x lens). This data was developed using the same antibody clone with 20251-1-PBS in a different storage buffer formulation.