

For Research Use Only

IGF1R/CD221 Polyclonal antibody

Catalog Number: 20254-1-AP

Featured Product

56 Publications



Basic Information

Catalog Number:

20254-1-AP

Size:

150ul, Concentration: 600 ug/ml by Nanodrop;

Source:

Rabbit

Isotype:

IgG

GenBank Accession Number:

NM_000875

GeneID (NCBI):

3480

UNIPROT ID:

P08069

Full Name:

IGF I receptor

Calculated MW:

155 kDa

Observed MW:

100, 130 kDa

Purification Method:

Antigen affinity purification

Recommended Dilutions:

WB: 1:500-1:2000

IP: 0.5-4.0 ug for 1.0-3.0 mg of total protein lysate

IHC: 1:100-1:400

Applications

Tested Applications:

WB, IHC, IP, ELISA

Cited Applications:

WB, IHC, IF, IP

Species Specificity:

human, mouse

Cited Species:

human, mouse, rat, pig, chicken

Positive Controls:

WB : HeLa cells, L02 cells

IP : HeLa cells,

IHC : human lung cancer tissue,

Note-IHC: suggested antigen retrieval with TE buffer pH 9.0; (*) Alternatively, antigen retrieval may be performed with citrate buffer pH 6.0

Background Information

IGF1R, also named as CD221, is a receptor tyrosine kinase which mediates actions of INS-like growth factor 1 (IGF1). IGF1R binds IGF1 with high affinity and IGF2 and INS with a lower affinity, the activated IGF1R is involved in cell growth and survival control. It is crucial for tumor transformation and survival of malignant cells. IGF1R is translated as ~220 kDa pro-receptors (PMID: 33969359). IGF1R is a heterotetrameric receptor, composed of two alpha subunits (~130 kDa) and two beta subunits (~100-120 kDa) (PMID: 6279656). Both the alpha and beta subunits are synthesized from a single mRNA precursor. The precursor is then glycosylated, proteolytically cleaved, and crosslinked by cysteine bonds.

Notable Publications

Author	Pubmed ID	Journal	Application
YanHua Fan	36174847	Fitoterapia	WB
Kuanyu Wang	31807171	Oncol Lett	WB
Zhanxia Li	30454699	Biochem Biophys Res Commun	WB

Storage

Storage:

Store at -20°C. Stable for one year after shipment.

Storage Buffer:

PBS with 0.02% sodium azide and 50% glycerol, pH7.3

Aliquoting is unnecessary for -20°C storage

*** 20ul sizes contain 0.1% BSA

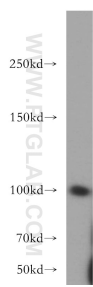
For technical support and original validation data for this product please contact:

T: 1 (888) 4PTGLAB (1-888-478-4522) (toll free in USA), or 1(312) 455-8498 (outside USA)

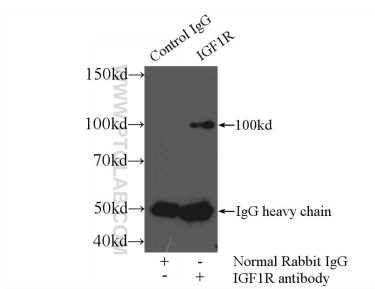
E: proteintech@ptglab.com
W: ptglab.com

This product is exclusively available under Proteintech Group brand and is not available to purchase from any other manufacturer.

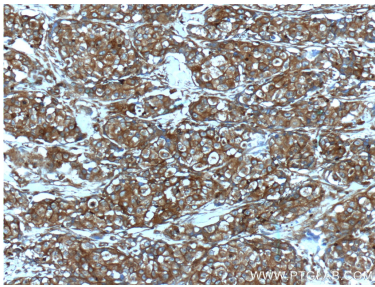
Selected Validation Data



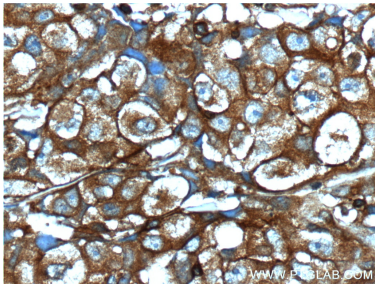
HeLa cells were subjected to SDS PAGE followed by western blot with 20254-1-AP (IGF1R beta chain antibody) at dilution of 1:400 incubated at room temperature for 1.5 hours.



IP result of anti-IGF1R (IP:20254-1-AP, 4ug; Detection:20254-1-AP 1:300) with HeLa cells lysate 2400ug.



Immunohistochemical analysis of paraffin-embedded human lung cancer tissue slide using 20254-1-AP (IGF1R beta chain antibody at dilution of 1:200 (under 10x lens).



Immunohistochemical analysis of paraffin-embedded human lung cancer tissue slide using 20254-1-AP (IGF1R beta chain antibody at dilution of 1:200 (under 40x lens).