

For Research Use Only

SERINC3 Polyclonal antibody

Catalog Number: 20267-1-AP



Basic Information

Catalog Number:

20267-1-AP

Size:

150ul , Concentration: 160 ug/ml by Nanodrop and 133 ug/ml by Bradford method using BSA as the standard;

Source:

Rabbit

Isotype:

IgG

GenBank Accession Number:

NM_006811

GeneID (NCBI):

10955

UNIPROT ID:

Q13530

Full Name:

serine incorporator 3

Calculated MW:

53 kDa

Observed MW:

53 kDa

Purification Method:

Antigen affinity purification

Recommended Dilutions:

WB 1:200-1:1000

IHC 1:50-1:500

Applications

Tested Applications:

WB, IHC, ELISA

Species Specificity:

human, mouse, rat

Note-IHC: suggested antigen retrieval with TE buffer pH 9.0; (*) Alternatively, antigen retrieval may be performed with citrate buffer pH 6.0

Positive Controls:

WB : mouse pancreas tissue,

IHC : human kidney tissue,

Background Information

SERINC, also named as DIFF33 and TDE1, belongs to the TDE1 family. SERINC3 may be involved in cellular transformation. The antibody is specific to SERINC3.

Storage

Storage:

Store at -20°C. Stable for one year after shipment.

Storage Buffer:

PBS with 0.02% sodium azide and 50% glycerol pH 7.3.

Aliquoting is unnecessary for -20°C storage

*** 20ul sizes contain 0.1% BSA

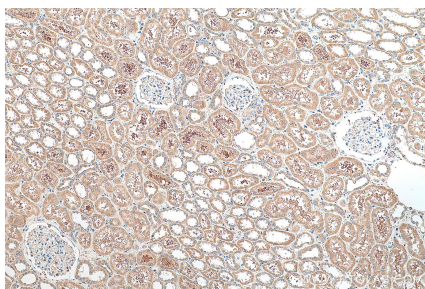
For technical support and original validation data for this product please contact:

T: 1 (888) 4PTGLAB (1-888-478-4522) (toll free in USA), or 1(312) 455-8498 (outside USA)

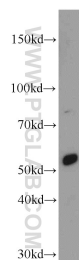
E: proteintech@ptglab.com
W: ptglab.com

This product is exclusively available under Proteintech Group brand and is not available to purchase from any other manufacturer.

Selected Validation Data



Immunohistochemical analysis of paraffin-embedded human kidney tissue slide using 20267-1-AP (SERINC3 antibody) at dilution of 1:200 (under 10x lens). Heat mediated antigen retrieval with Tris-EDTA buffer (pH 9.0).



mouse pancreas tissue were subjected to SDS PAGE followed by western blot with 20267-1-AP (SERINC3 antibody) at dilution of 1:100 incubated at room temperature for 1.5 hours.