

For Research Use Only

# SERINC3 Polyclonal antibody, PBS Only

Catalog Number:20267-1-PBS



## Basic Information

Catalog Number:

20267-1-PBS

Size:

100ug, Concentration: 1 mg/ml by Nanodrop;

Source:

Rabbit

Isotype:

IgG

GenBank Accession Number:

NM\_006811

GeneID (NCBI):

10955

UNIPROT ID:

Q13530

Full Name:

serine incorporator 3

Calculated MW:

53 kDa

Observed MW:

53 kDa

Purification Method:

Antigen affinity purification

## Applications

Tested Applications:

WB, IHC, Indirect ELISA

Species Specificity:

human, mouse, rat

## Background Information

SERINC, also named as DIFF33 and TDE1, belongs to the TDE1 family. SERINC3 may be involved in cellular transformation. The antibody is specific to SERINC3.

## Storage

Storage:

Store at -80°C.

Storage Buffer:

PBS Only

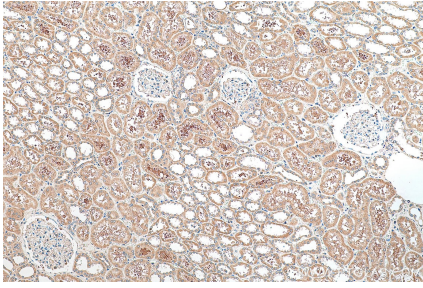
For technical support and original validation data for this product please contact:

T: 1 (888) 4PTGLAB (1-888-478-4522) (toll free in USA), or 1(312) 455-8498 (outside USA)

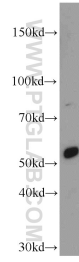
E: [proteintech@ptglab.com](mailto:proteintech@ptglab.com)  
W: [ptglab.com](http://ptglab.com)

This product is exclusively available under Proteintech Group brand and is not available to purchase from any other manufacturer.

## Selected Validation Data



Immunohistochemical analysis of paraffin-embedded human kidney tissue slide using 20267-1-AP (SERINC3 antibody) at dilution of 1:200 (under 10x lens). Heat mediated antigen retrieval with Tris-EDTA buffer (pH 9.0). This data was developed using the same antibody clone with 20267-1-PBS in a different storage buffer formulation.



mouse pancreas tissue were subjected to SDS PAGE followed by western blot with 20267-1-AP (SERINC3 antibody) at dilution of 1:100 incubated at room temperature for 1.5 hours. This data was developed using the same antibody clone with 20267-1-PBS in a different storage buffer formulation.