

For Research Use Only

# RREB1-Specific Polyclonal antibody



Catalog Number: 20280-1-AP

Featured Product

2 Publications

## Basic Information

### Catalog Number:

20280-1-AP

### Size:

150ul, Concentration: 350 µg/ml by Nanodrop and 187 µg/ml by Bradford method using BSA as the standard;

### Source:

Rabbit

### Isotype:

IgG

### GenBank Accession Number:

NM\_001003698

### GeneID (NCBI):

6239

### UNIPROT ID:

Q92766

### Full Name:

ras responsive element binding protein 1

### Calculated MW:

181 kDa

### Observed MW:

160-181 kDa, 250 kDa

### Purification Method:

Antigen affinity purification

### Recommended Dilutions:

WB 1:500-1:1000

IHC 1:200-1:800

## Applications

### Tested Applications:

WB, IHC, ELISA

### Cited Applications:

WB, IHC, ChIP

### Species Specificity:

human

### Cited Species:

human

**Note-IHC: suggested antigen retrieval with TE buffer pH 9.0; (\*) Alternatively, antigen retrieval may be performed with citrate buffer pH 6.0**

### Positive Controls:

WB: BxPC-3 cells, SH-SY5Y cells, HeLa cells

IHC: human urothelial carcinoma tissue, human breast cancer tissue, human pancreas cancer tissue

## Background Information

RREB1, also named as FINB and Zep-1, belongs to the krueppel C2H2-type zinc-finger protein family. RREB1 is a transcription factor that binds specifically to the RAS-responsive elements (RRE) of gene promoters. It may be involved in Ras/Raf-mediated cell differentiation by enhancing calcitonin expression. RREB1 represses the angiotensinogen gene. RREB1 can induce expression of p53 and repress p16 which associated with the expression of tumour. It has been reported that the RREB1 can be a candidate gene for type 2 diabetes associated end-stage kidney disease. To some extent, the decrease of zinc in human pancreatic adenocarcinoma is associated with the downregulation of RREB1. RREB1 has some isoforms with 250 kDa, 180-200 kDa and 140-160 kDa protein. (PMID: 21703425, 15067362, 25050557, 25027322)

## Notable Publications

Author	Pubmed ID	Journal	Application
Qi Gao	34666611	Cell Cycle	WB,IHC
Yanguan Guo	38043062	Cell Rep	ChIP,WB

## Storage

### Storage:

Store at -20°C. Stable for one year after shipment.

### Storage Buffer:

PBS with 0.02% sodium azide and 50% glycerol pH 7.3.

Aliquoting is unnecessary for -20°C storage

\*\*\* 20ul sizes contain 0.1% BSA

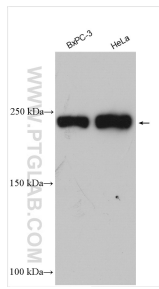
For technical support and original validation data for this product please contact:

T: 1 (888) 4PTGLAB (1-888-478-4522) (toll free in USA), or 1(312) 455-8498 (outside USA)

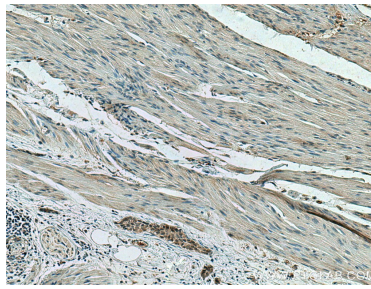
E: proteintech@ptglab.com  
W: ptglab.com

This product is exclusively available under Proteintech Group brand and is not available to purchase from any other manufacturer.

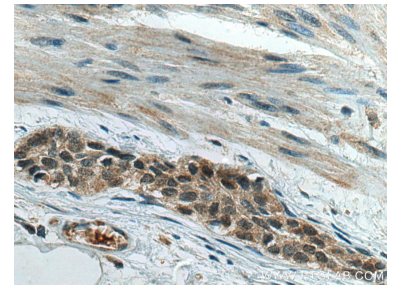
## Selected Validation Data



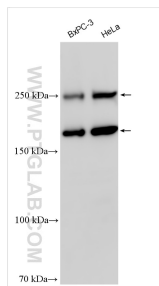
Various lysates were subjected to SDS PAGE followed by western blot with 20280-1-AP (RREB1-Specific antibody) at dilution of 1:500 incubated at room temperature for 1.5 hours.



Immunohistochemical analysis of paraffin-embedded human urothelial carcinoma tissue slide using 20280-1-AP (RREB1-Specific antibody) at dilution of 1:400 (under 10x lens). Heat mediated antigen retrieval with Tris-EDTA buffer (pH 9.0).



Immunohistochemical analysis of paraffin-embedded human urothelial carcinoma tissue slide using 20280-1-AP (RREB1-Specific antibody) at dilution of 1:400 (under 40x lens). Heat mediated antigen retrieval with Tris-EDTA buffer (pH 9.0).



Various lysates were subjected to SDS PAGE followed by western blot with 20280-1-AP (RREB1-Specific antibody) at dilution of 1:600 incubated at room temperature for 1.5 hours.