

For Research Use Only

XRCC2 Polyclonal antibody

Catalog Number: 20285-1-AP

2 Publications



Basic Information

Catalog Number:

20285-1-AP

Size:

150ul, Concentration: 300 ug/ml by Nanodrop and 267 ug/ml by Bradford method using BSA as the standard;

Source:

Rabbit

Isotype:

IgG

Immunogen Catalog Number:

AG14011

GenBank Accession Number:

BC042137

GeneID (NCBI):

7516

UNIPROT ID:

O43543

Full Name:

X-ray repair complementing defective repair in Chinese hamster cells 2

Calculated MW:

280 aa, 32 kDa

Observed MW:

35-40 kDa

Purification Method:

Antigen affinity purification

Recommended Dilutions:

WB 1:500-1:1000

IP 0.5-4.0 ug for 1.0-3.0 mg of total protein lysate

Applications

Tested Applications:

WB, IP, ELISA

Cited Applications:

WB

Species Specificity:

human

Cited Species:

human

Positive Controls:

WB : K-562 cells, A375 cells, HEK-293 cells

IP : K-562 cells,

Notable Publications

Author	Pubmed ID	Journal	Application
Yating Li	39739965	PLoS One	WB
Nazareno Bona	37580626	Nat Struct Mol Biol	WB

Storage

Storage:

Store at -20°C. Stable for one year after shipment.

Storage Buffer:

PBS with 0.02% sodium azide and 50% glycerol, pH7.3

Aliquoting is unnecessary for -20°C storage

*** 20ul sizes contain 0.1% BSA

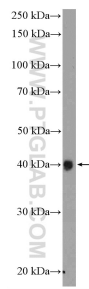
For technical support and original validation data for this product please contact:

T: 1 (888) 4PTGLAB (1-888-478-4522) (toll free in USA), or 1(312) 455-8498 (outside USA)

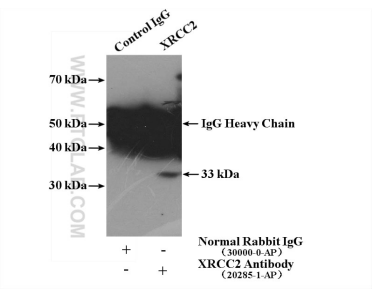
E: proteintech@ptglab.com
W: ptglab.com

This product is exclusively available under Proteintech Group brand and is not available to purchase from any other manufacturer.

Selected Validation Data



K-562 cells were subjected to SDS PAGE followed by western blot with 20285-1-AP (XRCC2 Antibody) at dilution of 1:600 incubated at room temperature for 1.5 hours.



IP result of anti-XRCC2 (IP:20285-1-AP, 4ug; Detection:20285-1-AP 1:500) with K-562 cells lysate 3200ug.