

For Research Use Only

# P2RY2 Polyclonal antibody, PBS Only

Catalog Number:20297-1-PBS



## Basic Information

**Catalog Number:**

20297-1-PBS

**Size:**

100ug, Concentration: 1 mg/ml by Nanodrop;

**Source:**

Rabbit

**Isotype:**

IgG

**Immunogen Catalog Number:**

AG14107

**GenBank Accession Number:**

BC012104

**GeneID (NCBI):**

5029

**UNIPROT ID:**

P41231

**Full Name:**

purinergic receptor P2Y, G-protein coupled, 2

**Calculated MW:**

377 aa, 42 kDa

**Observed MW:**

45 kDa

**Purification Method:**

Antigen affinity purification

## Applications

**Tested Applications:**

WB, IHC, Indirect ELISA

**Species Specificity:**

human

## Background Information

P2RY2, also named P2RU1, P2U1, and P2Y2, belongs to the G-protein coupled receptor 1 family. It is a receptor for ATP and UTP coupled to G-proteins that activate a phosphatidylinositol-calcium second messenger system. Extracellular ATP then acts on purinergic receptors, including P2RY2, to activate proline-rich tyrosine kinase 2 (Pyk2) kinase and transient plasma membrane depolarization.

## Storage

**Storage:**

Store at -80°C.

**Storage Buffer:**

PBS only, pH7.3

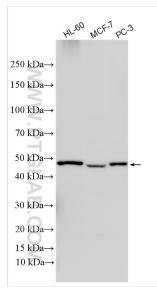
For technical support and original validation data for this product please contact:

T: 1 (888) 4PTGLAB (1-888-478-4522) (toll free in USA), or 1(312) 455-8498 (outside USA)

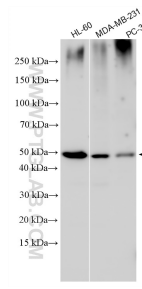
E: [proteintech@ptglab.com](mailto:proteintech@ptglab.com)  
W: [ptglab.com](http://ptglab.com)

**This product is exclusively available under Proteintech Group brand and is not available to purchase from any other manufacturer.**

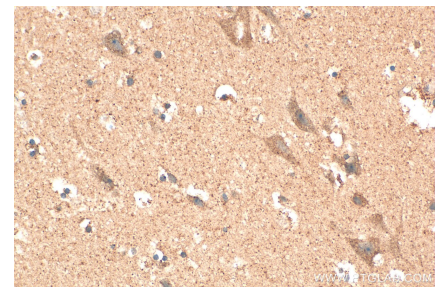
## Selected Validation Data



Various lysates were subjected to SDS PAGE followed by western blot with 20297-1-AP (P2RY2 antibody) at dilution of 1:1000 incubated at room temperature for 1.5 hours. This data was developed using the same antibody clone with 20297-1-PBS in a different storage buffer formulation.



Various lysates were subjected to SDS PAGE followed by western blot with 20297-1-AP (P2RY2 antibody) at dilution of 1:1000 incubated at room temperature for 1.5 hours. This data was developed using the same antibody clone with 20297-1-PBS in a different storage buffer formulation.



Immunohistochemical analysis of paraffin-embedded human brain tissue slide using 20297-1-AP (P2RY2 antibody) at dilution of 1:200 (under 40x lens). Heat mediated antigen retrieval with Tris-EDTA buffer (pH 9.0). This data was developed using the same antibody clone with 20297-1-PBS in a different storage buffer formulation.