

For Research Use Only

SLC6A8 Polyclonal antibody

Catalog Number: 20299-1-AP

Featured Product

9 Publications



Basic Information

Catalog Number: 20299-1-AP	GenBank Accession Number: BC012355	Purification Method: Antigen affinity purification
Size: 150ul, Concentration: 500 µg/ml by Nanodrop and 307 µg/ml by Bradford method using BSA as the standard;	GeneID (NCBI): 6535	Recommended Dilutions: WB 1:300-1:1000 IHC 1:50-1:500 IF 1:50-1:500
Source: Rabbit	Full Name: solute carrier family 6 (neurotransmitter transporter, creatine), member 8	
Isotype: IgG	Calculated MW: 635 aa, 71 kDa	
Immunogen Catalog Number: AG14110	Observed MW: 65-70 kDa	

Applications

Tested Applications:

IF, IHC, WB, ELISA

Cited Applications:

IHC, WB

Species Specificity:

human, mouse, rat

Cited Species:

human, mouse

Note-IHC: suggested antigen retrieval with TE buffer pH 9.0; (*) Alternatively, antigen retrieval may be performed with citrate buffer pH 6.0

Positive Controls:

WB: mouse heart tissue, HUVEC cells, mouse kidney tissue, rat heart tissue, rat kidney tissue

IHC: mouse brain tissue,

IF: mouse brain tissue, PC-3 cells

Background Information

SLC6A8, also known as the sodium- and chloride-dependent creatine transporter 1 (CT1), plays a critical role in transporting creatine, a crucial molecule for energy metabolism, into cells. SLC6A8 belongs to the solute carrier family 6 (SLC6), responsible for transporting diverse molecules across cell membranes. SLC6A8 expression is highest in muscle, brain, and other tissues with high energy demands. Mutations in SLC6A8 cause creatine transporter deficiency, an X-linked mental retardation disorder (PMID: 17465020).

Notable Publications

Author	Pubmed ID	Journal	Application
Yongfei Fan	35692837	Front Genet	IHC
Sho Nishikawa	31914311	J Agric Food Chem	WB
Yongfei Fan	35251966	Front Oncol	IHC

Storage

Storage:

Store at -20°C. Stable for one year after shipment.

Storage Buffer:

PBS with 0.02% sodium azide and 50% glycerol pH 7.3.

Aliquoting is unnecessary for -20°C storage

*** 20ul sizes contain 0.1% BSA

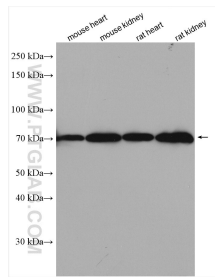
For technical support and original validation data for this product please contact:

T: 1 (888) 4PTGLAB (1-888-478-4522) (toll free in USA), or 1(312) 455-8498 (outside USA)

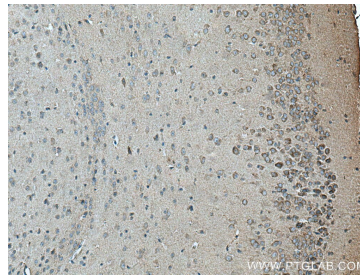
E: proteintech@ptglab.com
W: ptglab.com

This product is exclusively available under Proteintech Group brand and is not available to purchase from any other manufacturer.

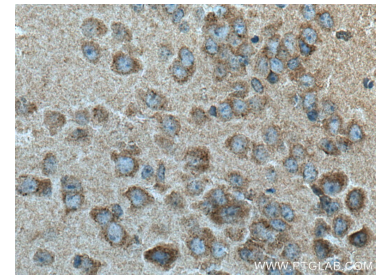
Selected Validation Data



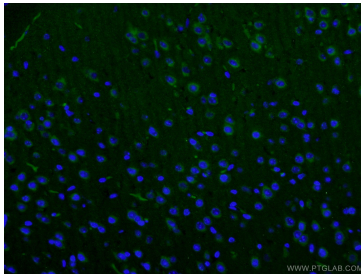
Various lysates were subjected to SDS PAGE followed by western blot with 20299-1-AP (SLC6A8 antibody) at dilution of 1:600 incubated at room temperature for 1.5 hours.



Immunohistochemical analysis of paraffin-embedded mouse brain tissue slide using 20299-1-AP (SLC6A8 antibody) at dilution of 1:200 (under 10x lens). Heat mediated antigen retrieval with Tris-EDTA buffer (pH 9.0).



Immunohistochemical analysis of paraffin-embedded mouse brain tissue slide using 20299-1-AP (SLC6A8 antibody) at dilution of 1:200 (under 40x lens). Heat mediated antigen retrieval with Tris-EDTA buffer (pH 9.0).



Immunofluorescent analysis of (4% PFA) fixed mouse brain tissue using 20299-1-AP (SLC6A8 antibody) at dilution of 1:50 and Coralite488-Conjugated AffiniPure Goat Anti-Rabbit IgG(H+L).