

For Research Use Only

# SLC6A8 Polyclonal antibody, PBS Only

Catalog Number: 20299-1-PBS

Featured Product



## Basic Information

### Catalog Number:

20299-1-PBS

### Size:

100ug, Concentration: 1 mg/ml by Nanodrop;

### Source:

Rabbit

### Isotype:

IgG

### Immunogen Catalog Number:

AG14110

### GenBank Accession Number:

BC012355

### GeneID (NCBI):

6535

### UNIPROT ID:

P48029

### Full Name:

solute carrier family 6 (neurotransmitter transporter, creatine), member 8

### Calculated MW:

635 aa, 71 kDa

### Observed MW:

65-70 kDa

### Purification Method:

Antigen affinity purification

## Applications

### Tested Applications:

WB, IHC, IF-P, Indirect ELISA

### Species Specificity:

human, mouse, rat

## Background Information

SLC6A8, also known as the sodium- and chloride-dependent creatine transporter 1 (CT1), plays a critical role in transporting creatine, a crucial molecule for energy metabolism, into cells. SLC6A8 belongs to the solute carrier family 6 (SLC6), responsible for transporting diverse molecules across cell membranes. SLC6A8 expression is highest in muscle, kidney, and other tissues with high energy demands. Mutations in SLC6A8 cause creatine transporter deficiency, an X-linked mental retardation disorder (PMID: 17465020).

## Storage

### Storage:

Store at -80°C.

### Storage Buffer:

PBS Only

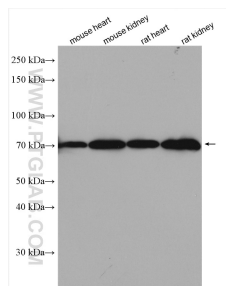
For technical support and original validation data for this product please contact:

T: 1 (888) 4PTGLAB (1-888-478-4522) (toll free in USA), or 1(312) 455-8498 (outside USA)

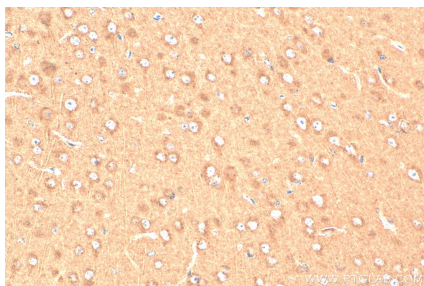
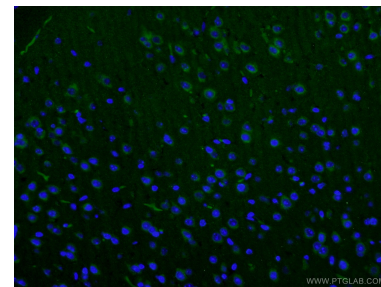
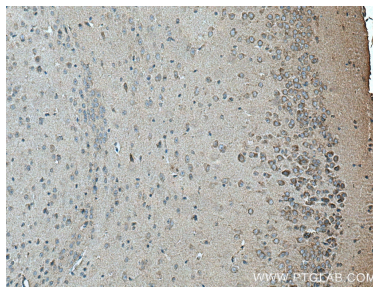
E: [proteintech@ptglab.com](mailto:proteintech@ptglab.com)  
W: [ptglab.com](http://ptglab.com)

This product is exclusively available under Proteintech Group brand and is not available to purchase from any other manufacturer.

## Selected Validation Data



Various lysates were subjected to SDS PAGE followed by western blot with 20299-1-AP (SLC6A8 antibody) at dilution of 1:600 incubated at room temperature for 1.5 hours. This data was developed using the same antibody clone with 20299-1-PBS in a different storage buffer formulation.



Immunohistochemical analysis of paraffin-embedded mouse brain tissue slide using 20299-1-AP (SLC6A8 antibody) at dilution of 1:200 (under 40x lens). Heat mediated antigen retrieval with Tris-EDTA buffer (pH 9.0). This data was developed using the same antibody clone with 20299-1-PBS in a different storage buffer formulation.