

For Research Use Only

# ELOVL2 Polyclonal antibody

Catalog Number: 20308-1-AP

2 Publications



## Basic Information

### Catalog Number:

20308-1-AP

### Size:

150ul, Concentration: 300 ug/ml by Nanodrop and 260 ug/ml by Bradford method using BSA as the standard;

### Source:

Rabbit

### Isotype:

IgG

### Immunogen Catalog Number:

AG14143

### GenBank Accession Number:

BC050278

### GeneID (NCBI):

54898

### UNIPROT ID:

Q9NXB9

### Full Name:

elongation of very long chain fatty acids (FEN1/Elo2, SUR4/Elo3, yeast)-like 2

### Calculated MW:

296 aa, 35 kDa

### Purification Method:

Antigen affinity purification

### Recommended Dilutions:

IHC 1:20-1:200

## Applications

### Tested Applications:

IHC, ELISA

### Cited Applications:

IHC

### Species Specificity:

human, mouse, rat

### Cited Species:

human, mouse

**Note-IHC: suggested antigen retrieval with TE buffer pH 9.0; (\*) Alternatively, antigen retrieval may be performed with citrate buffer pH 6.0**

### Positive Controls:

IHC : human testis tissue, human hepatocirrhosis tissue

## Notable Publications

Author	Pubmed ID	Journal	Application
Sahar F Bannoura	39321913	Cancer Lett	IHC
Zhenyu Wang	37483592	Front Immunol	IHC

## Storage

### Storage:

Store at -20°C. Stable for one year after shipment.

### Storage Buffer:

PBS with 0.02% sodium azide and 50% glycerol pH 7.3.

Aliquoting is unnecessary for -20°C storage

\*\*\* 20ul sizes contain 0.1% BSA

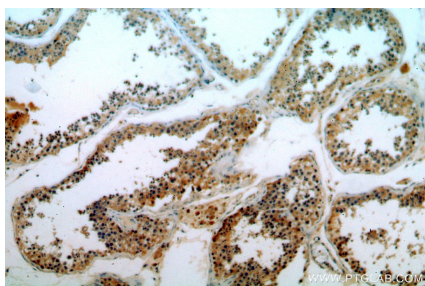
For technical support and original validation data for this product please contact:

T: 1 (888) 4PTGLAB (1-888-478-4522) (toll free in USA), or 1(312) 455-8498 (outside USA)

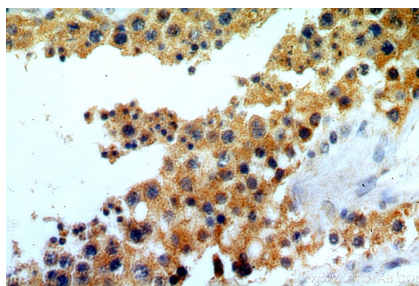
E: [proteintech@ptglab.com](mailto:proteintech@ptglab.com)  
W: [ptglab.com](http://ptglab.com)

This product is exclusively available under Proteintech Group brand and is not available to purchase from any other manufacturer.

## Selected Validation Data



Immunohistochemical analysis of paraffin-embedded human testis using 20308-1-AP (ELOVL2 antibody) at dilution of 1:50 (under 10x lens).



Immunohistochemical analysis of paraffin-embedded human testis using 20308-1-AP (ELOVL2 antibody) at dilution of 1:50 (under 40x lens).