

For Research Use Only

Tetranectin Polyclonal antibody, PBS Only

Catalog Number: 20311-1-PBS



Basic Information

Catalog Number:

20311-1-PBS

Size:

100ug , Concentration: 1 mg/ml by Nanodrop;

Source:

Rabbit

Isotype:

IgG

Immunogen Catalog Number:

AG14147

GenBank Accession Number:

BC011024

GeneID (NCBI):

7123

UNIPROT ID:

P05452

Full Name:

C-type lectin domain family 3, member B

Calculated MW:

202 aa, 22 kDa

Observed MW:

22 kDa

Purification Method:

Antigen affinity purification

Applications

Tested Applications:

WB, IF/ICC, IP, Indirect ELISA

Species Specificity:

human

Background Information

C-Type Lectin Domain Family 3 Member B (CLEC3B) is a transmembrane Ca²⁺-binding protein, locating in cell plasma, extracellular matrix and exosomes. Downregulation of CLEC3B has been reported in various diseases. It was demonstrated in CLEC3B-deficient mice that the absence of CLEC3B impeded the mineralization process in osteogenesis. (PMID: 31477130)

Storage

Storage:

Store at -80°C.

Storage Buffer:

PBS Only

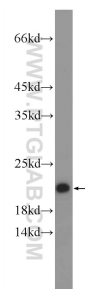
For technical support and original validation data for this product please contact:

T: 1 (888) 4PTGLAB (1-888-478-4522) (toll free in USA), or 1(312) 455-8498 (outside USA)

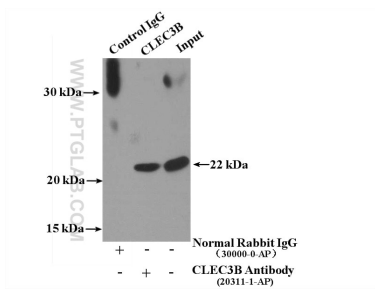
E: proteintech@ptglab.com
W: ptglab.com

This product is exclusively available under Proteintech Group brand and is not available to purchase from any other manufacturer.

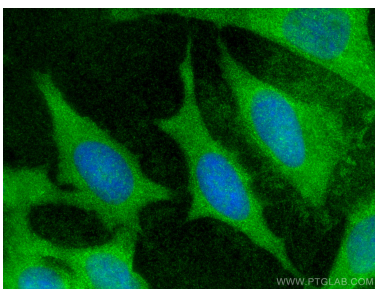
Selected Validation Data



human plasma were subjected to SDS PAGE followed by western blot with 20311-1-AP (CLEC3B Antibody) at dilution of 1:600 incubated at room temperature for 1.5 hours. This data was developed using the same antibody clone with 20311-1-PBS in a different storage buffer formulation.



IP result of anti-CLEC3B (IP:20311-1-AP, 4ug; Detection:20311-1-AP 1:300) with human plasma lysate 4000ug. This data was developed using the same antibody clone with 20311-1-PBS in a different storage buffer formulation.



Immunofluorescent analysis of (-20°C Methanol) fixed HeLa cells using CLEC3B antibody (20311-1-AP) at dilution of 1:400 and CoraLite®488-Conjugated AffiniPure Goat Anti-Rabbit IgG(H+L). This data was developed using the same antibody clone with 20311-1-PBS in a different storage buffer formulation.