

For Research Use Only

# CLN6 Polyclonal antibody

Catalog Number: 20315-1-AP

1 Publications



## Basic Information

### Catalog Number:

20315-1-AP

### Size:

150ul, Concentration: 600 ug/ml by Nanodrop and 513 ug/ml by Bradford method using BSA as the standard;

### Source:

Rabbit

### Isotype:

IgG

### Immunogen Catalog Number:

AG14159

### GenBank Accession Number:

BC010849

### GeneID (NCBI):

54982

### UNIPROT ID:

Q9NWW5

### Full Name:

ceroid-lipofuscinosis, neuronal 6, late infantile, variant

### Calculated MW:

311 aa, 36 kDa

### Observed MW:

30 kDa

### Purification Method:

Antigen affinity purification

### Recommended Dilutions:

WB 1:500-1:2000

IP 0.5-4.0 ug for 1.0-3.0 mg of total protein lysate

IHC 1:20-1:200

IF/ICC 1:10-1:100

## Applications

### Tested Applications:

WB, IHC, IF/ICC, IP, ELISA

### Cited Applications:

WB

### Species Specificity:

human, mouse

### Cited Species:

human

**Note-IHC: suggested antigen retrieval with TE buffer pH 9.0; (\*) Alternatively, antigen retrieval may be performed with citrate buffer pH 6.0**

### Positive Controls:

WB : SH-SY5Y cells, HEK-293 cells

IP : HEK-293 cells,

IHC : human colon tissue, human small intestine tissue

IF/ICC : HEK-293 cells,

## Notable Publications

Author	Pubmed ID	Journal	Application
Joseph J Chin	30528883	Mol Genet Metab	WB

## Storage

### Storage:

Store at -20°C. Stable for one year after shipment.

### Storage Buffer:

PBS with 0.02% sodium azide and 50% glycerol pH 7.3.

Aliquoting is unnecessary for -20°C storage

\*\*\* 20ul sizes contain 0.1% BSA

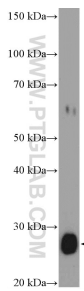
For technical support and original validation data for this product please contact:

T: 1 (888) 4PTGLAB (1-888-478-4522) (toll free in USA), or 1(312) 455-8498 (outside USA)

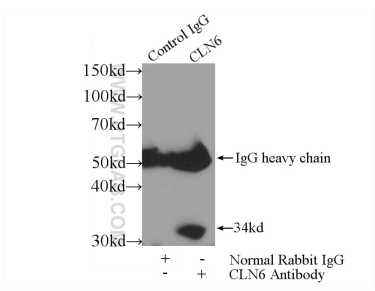
E: [proteintech@ptglab.com](mailto:proteintech@ptglab.com)  
W: [ptglab.com](http://ptglab.com)

This product is exclusively available under Proteintech Group brand and is not available to purchase from any other manufacturer.

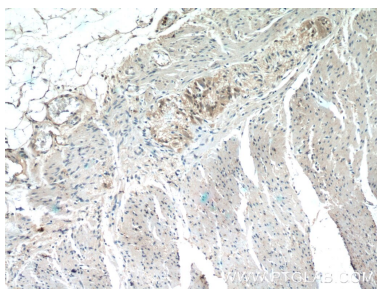
Selected Validation Data



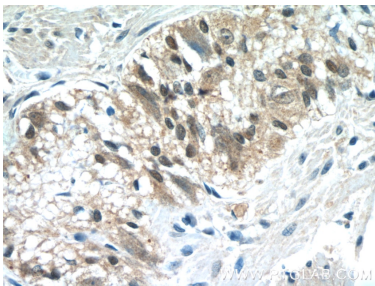
SH-SY5Y cells were subjected to SDS PAGE followed by western blot with 20315-1-AP (CLN6 Antibody) at dilution of 1:1000 incubated at room temperature for 1.5 hours.



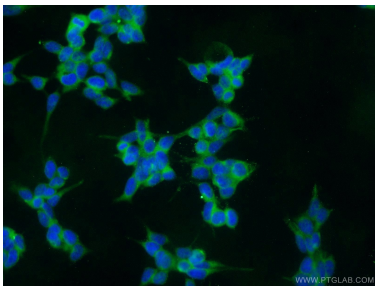
IP result of anti-CLN6 (IP:20315-1-AP, 4ug; Detection:20315-1-AP 1:300) with HEK-293 cells lysate 2560ug.



Immunohistochemical analysis of paraffin-embedded human colon tissue slide using 20315-1-AP (CLN6 Antibody) at dilution of 1:50 (under 10x lens).



Immunohistochemical analysis of paraffin-embedded human colon tissue slide using 20315-1-AP (CLN6 Antibody) at dilution of 1:50 (under 40x lens).



Immunofluorescent analysis of HEK-293 cells using 20315-1-AP (CLN6 antibody) at dilution of 1:25 and Alexa Fluor 488-conjugated AffiniPure Goat Anti-Rabbit IgG(H+L).