

For Research Use Only

MEF2C Polyclonal antibody

Catalog Number: 20326-1-AP



Basic Information

Catalog Number: 20326-1-AP	GenBank Accession Number: BC026341	Purification Method: Antigen affinity purification
Size: 150ul , Concentration: 900 µg/ml by Nanodrop and 607 µg/ml by Bradford method using BSA as the standard;	GeneID (NCBI): 4208	Recommended Dilutions: WB 1:500-1:2000 IHC 1:20-1:200 IF 1:50-1:500
Source: Rabbit	Full Name: myocyte enhancer factor 2C	
Isotype: IgG	Calculated MW: 469 aa, 51 kDa	
Immunogen Catalog Number: AG13255	Observed MW: 45-70 kDa	

Applications

Tested Applications:

IF, IHC, WB, ELISA

Species Specificity:

human, mouse, rat

Note-IHC: suggested antigen retrieval with TE buffer pH 9.0; (*) Alternatively, antigen retrieval may be performed with citrate buffer pH 6.0

Positive Controls:

WB : HeLa cells, mouse small intestine tissue, mouse testis tissue, rat lymph tissue, SH-SY5Y cells

IHC : human heart tissue,

IF : mouse brain tissue,

Background Information

MEF2C belongs to the MEF2 family. It is a transcription activator which binds specifically to the MEF2 element present in the regulatory regions of many muscle-specific genes. MEF2C controls cardiac morphogenesis and myogenesis, and is also involved in vascular development[PMID: 20221419]. It plays an essential role in hippocampal-dependent learning and memory by suppressing the number of excitatory synapses and thus regulating basal and evoked synaptic transmission[PMID:18599438]. It is crucial for normal neuronal development, distribution, and electrical activity in the neocortex and is necessary for proper development of megakaryocytes and platelets and for bone marrow B lymphopoiesis[PMID: 21666133]. This protein is required for B-cell survival and proliferation in response to BCR stimulation, efficient IgG1 antibody responses to T-cell-dependent antigens and for normal induction of germinal center B cells. It may also be involved in neurogenesis and in the development of cortical architecture. MEF2C exists some isoforms with MV 50-52 kDa, 47 kDa, and 45 kDa, but modified MEF2C is about 55-66 kDa.

Storage

Storage:

Store at -20°C. Stable for one year after shipment.

Storage Buffer:

PBS with 0.02% sodium azide and 50% glycerol pH 7.3.

Aliquoting is unnecessary for -20°C storage

*** 20ul sizes contain 0.1% BSA

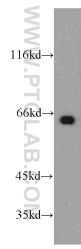
For technical support and original validation data for this product please contact:

T: 1 (888) 4PTGLAB (1-888-478-4522) (toll free in USA), or 1(312) 455-8498 (outside USA)

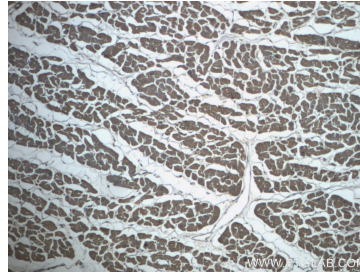
E: proteintech@ptglab.com
W: ptglab.com

This product is exclusively available under Proteintech Group brand and is not available to purchase from any other manufacturer.

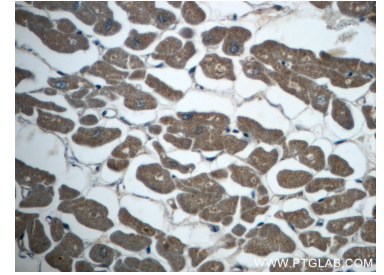
Selected Validation Data



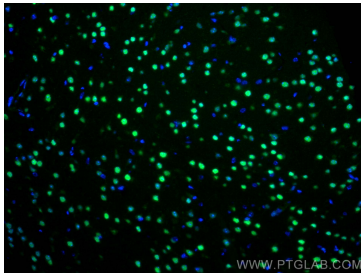
HeLa cells were subjected to SDS PAGE followed by western blot with 20326-1-AP (MEF2C antibody) at dilution of 1:500 incubated at room temperature for 1.5 hours.



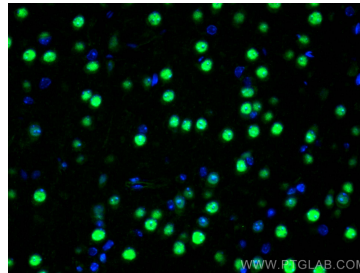
Immunohistochemical analysis of paraffin-embedded human heart slide using 20326-1-AP (MEF2C Antibody) at dilution of 1:50.



Immunohistochemical analysis of paraffin-embedded human heart slide using 20326-1-AP (MEF2C Antibody) at dilution of 1:50.



Immunofluorescent analysis of (4% PFA) fixed mouse brain tissue using MEF2C antibody (20326-1-AP) at dilution of 1:200 and CoraLite@488-Conjugated AffiniPure Goat Anti-Rabbit IgG(H+L).



Immunofluorescent analysis of (4% PFA) fixed mouse brain tissue using MEF2C antibody (20326-1-AP) at dilution of 1:200 and CoraLite@488-Conjugated AffiniPure Goat Anti-Rabbit IgG(H+L).