

For Research Use Only

# BTG3 Polyclonal antibody, PBS Only

Catalog Number: 20336-1-PBS



## Basic Information

**Catalog Number:**

20336-1-PBS

**Size:**

100ug, Concentration: 1 mg/ml by Nanodrop;

**Source:**

Rabbit

**Isotype:**

IgG

**Immunogen Catalog Number:**

AG14112

**GenBank Accession Number:**

BC011957

**GeneID (NCBI):**

10950

**UNIPROT ID:**

Q14201

**Full Name:**

BTG family, member 3

**Calculated MW:**

296 aa, 34 kDa

**Observed MW:**

34 kDa

**Purification Method:**

Antigen affinity purification

## Applications

**Tested Applications:**

WB, Indirect ELISA

**Species Specificity:**

human

## Background Information

BTG3 (B-cell translocation gene 3) is a member of the antiproliferative BTG/Tob gene family, which also includes BTG1, BTG2, BTG4, TOB, and TOB2. This gene family is characterized by similar N-terminal domains but divergent C-termini. BTG3 is considered a candidate tumor suppressor gene and plays a crucial role in various cellular processes, including cell proliferation, differentiation, and apoptosis. (PMID: 38714880)

## Storage

**Storage:**

Store at -80°C.

**Storage Buffer:**

PBS Only

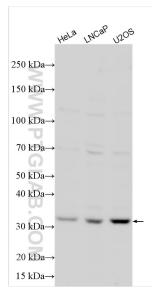
For technical support and original validation data for this product please contact:

T: 1 (888) 4PTGLAB (1-888-478-4522) (toll free in USA), or 1(312) 455-8498 (outside USA)

E: [proteintech@ptglab.com](mailto:proteintech@ptglab.com)  
W: [ptglab.com](http://ptglab.com)

**This product is exclusively available under Proteintech Group brand and is not available to purchase from any other manufacturer.**

## Selected Validation Data



Various lysates were subjected to SDS PAGE followed by western blot with 20336-1-AP (BTG3 antibody) at dilution of 1:800 incubated at room temperature for 1.5 hours. This data was developed using the same antibody clone with 20336-1-PBS in a different storage buffer formulation.