

For Research Use Only

TADA1L Polyclonal antibody

Catalog Number: 20337-1-AP

1 Publications



Basic Information

Catalog Number:

20337-1-AP

Size:

150ul, Concentration: 850 ug/ml by Nanodrop;

Source:

Rabbit

Isotype:

IgG

Immunogen Catalog Number:

AG14118

GenBank Accession Number:

BC015401

GeneID (NCBI):

117143

UNIPROT ID:

Q96BN2

Full Name:

transcriptional adaptor 1 (HFI1 homolog, yeast)-like

Calculated MW:

335 aa, 37 kDa

Observed MW:

38 kDa

Purification Method:

Antigen affinity purification

Recommended Dilutions:

WB 1:200-1:1000

IHC 1:20-1:200

IF/ICC 1:10-1:100

Applications

Tested Applications:

WB, IHC, IF/ICC, ELISA

Cited Applications:

WB

Species Specificity:

human, mouse

Cited Species:

human

Note-IHC: suggested antigen retrieval with TE buffer pH 9.0; (*) Alternatively, antigen retrieval may be performed with citrate buffer pH 6.0

Positive Controls:

WB : mouse testis tissue, NIH/3T3 cells

IHC : human testis tissue,

IF/ICC : HepG2 cells,

Background Information

The function of TADA1L has not been widely studied, and is yet to be fully elucidated. It probably involved in transcriptional regulation. The MW of this protein is 37 kDa, and Catalog# 20337-1-AP specially recognises the 37 kDa protein.

Notable Publications

Author	Pubmed ID	Journal	Application
Ying-Jiun C Chen	39168636	Genes Dev	WB

Storage

Storage:

Store at -20°C. Stable for one year after shipment.

Storage Buffer:

PBS with 0.02% sodium azide and 50% glycerol pH 7.3.

Aliquoting is unnecessary for -20°C storage

*** 20ul sizes contain 0.1% BSA

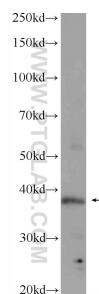
For technical support and original validation data for this product please contact:

T: 1 (888) 4PTGLAB (1-888-478-4522) (toll free in USA), or 1(312) 455-8498 (outside USA)

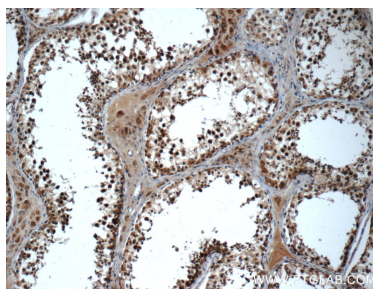
E: proteintech@ptglab.com
W: ptglab.com

This product is exclusively available under Proteintech Group brand and is not available to purchase from any other manufacturer.

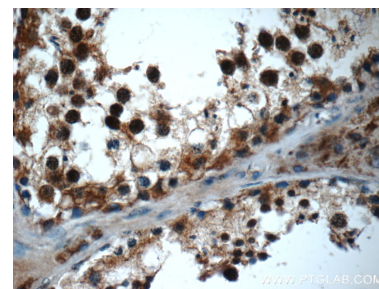
Selected Validation Data



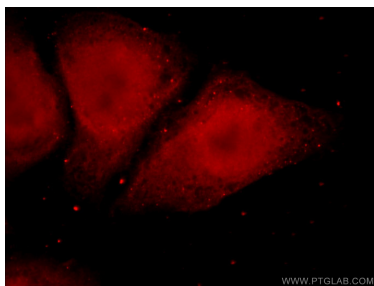
mouse testis tissue were subjected to SDS PAGE followed by western blot with 20337-1-AP (TADA1L Antibody) at dilution of 1:300 incubated at room temperature for 1.5 hours.



Immunohistochemical analysis of paraffin-embedded human testis tissue slide using 20337-1-AP (TADA1L Antibody) at dilution of 1:50 (under 10x lens).



Immunohistochemical analysis of paraffin-embedded human testis tissue slide using 20337-1-AP (TADA1L Antibody) at dilution of 1:50 (under 40x lens).



Immunofluorescent analysis of HepG2 cells using 20337-1-AP (TADA1L antibody) at dilution of 1:25 and Alexa Fluor 594-conjugated Goat Anti-Rabbit IgG(H+L).