

For Research Use Only

LASS2 Polyclonal antibody

Catalog Number: 20344-1-AP

Featured Product

5 Publications



Basic Information

Catalog Number:

20344-1-AP

Size:

150ul, Concentration: 500 ug/ml by Nanodrop;

Source:

Rabbit

Isotype:

IgG

Immunogen Catalog Number:

AG14151

GenBank Accession Number:

BC010032

GeneID (NCBI):

29956

UNIPROT ID:

Q96G23

Full Name:

LAG1 homolog, ceramide synthase 2

Calculated MW:

380 aa, 45 kDa

Observed MW:

45 kDa, 37 kDa

Purification Method:

Antigen affinity purification

Recommended Dilutions:

WB 1:1000-1:4000

IP 0.5-4.0 ug for 1.0-3.0 mg of total protein lysate

IHC 1:50-1:500

Applications

Tested Applications:

WB, IP, IHC, ELISA

Cited Applications:

WB, IF, IHC

Species Specificity:

human, mouse, rat

Cited Species:

human, mouse

Note-IHC: suggested antigen retrieval with TE buffer pH 9.0; (*) Alternatively, antigen retrieval may be performed with citrate buffer pH 6.0

Positive Controls:

WB : mouse liver tissue, HeLa cells, rat liver tissue, HepG2 cells

IP : HeLa cells,

IHC : human liver tissue, mouse lung tissue

Background Information

LASS2, also known as TMSG1, is a novel suppressor of human cancer metastasis. As one member of LASS family, including LASS1-6, LASS2 mRNA is at the highest level of all LASS members, and has the broadest tissue distribution, particularly abundant in the liver, kidney and brain in mice. The biological roles of LASS2 include protection from aging, hepatic INS resistance, and hepatocellular carcinoma (HCC) progression. LASS2 has been correlated with the degree of invasion and recurrence of carcinomas of the prostate, liver, breast and bladder.

Notable Publications

Author	Pubmed ID	Journal	Application
Ting Luan	30463687	Exp Cell Res	WB
Linda Sasset	35815623	Cardiovasc Res	WB
Haifeng Wang	26150338	Tumour Biol	WB

Storage

Storage:

Store at -20°C. Stable for one year after shipment.

Storage Buffer:

PBS with 0.02% sodium azide and 50% glycerol pH 7.3.

Aliquoting is unnecessary for -20°C storage

*** 20ul sizes contain 0.1% BSA

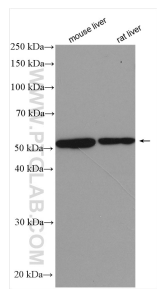
For technical support and original validation data for this product please contact:

T: 1 (888) 4PTGLAB (1-888-478-4522) (toll free in USA), or 1(312) 455-8498 (outside USA)

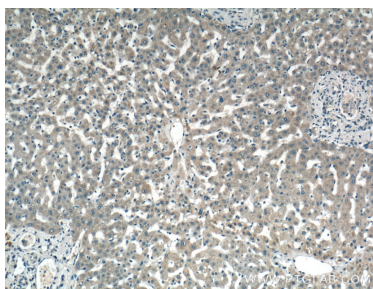
E: proteintech@ptglab.com
W: ptglab.com

This product is exclusively available under Proteintech Group brand and is not available to purchase from any other manufacturer.

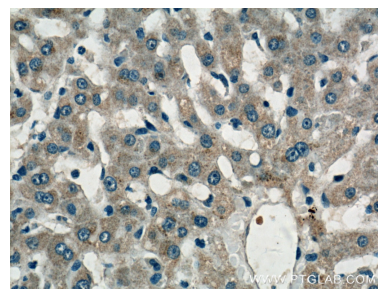
Selected Validation Data



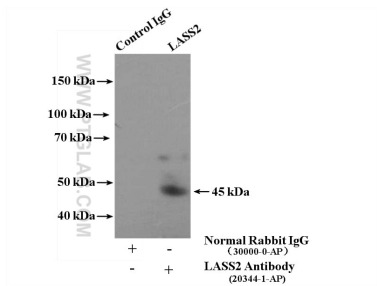
Various lysates were subjected to SDS PAGE followed by western blot with 20344-1-AP (LASS2 antibody) at dilution of 1:2000 incubated at room temperature for 1.5 hours.



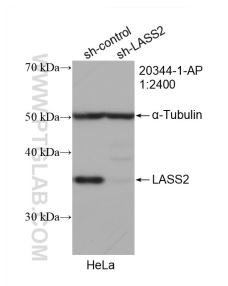
Immunohistochemical analysis of paraffin-embedded human liver tissue slide using 20344-1-AP (LASS2 Antibody) at dilution of 1:200 (under 10x lens).



Immunohistochemical analysis of paraffin-embedded human liver tissue slide using 20344-1-AP (LASS2 Antibody) at dilution of 1:200 (under 40x lens).



IP result of anti-LASS2 (IP:20344-1-AP, 4ug; Detection:20344-1-AP 1:500) with HeLa cells lysate 3200ug.



WB result of LASS2 antibody (20344-1-AP; 1:2400; incubated at room temperature for 1.5 hours) with sh-Control and sh-LASS2 transfected HeLa cells.