

For Research Use Only

SMEK2 Polyclonal antibody

Catalog Number: 20348-1-AP

2 Publications



Basic Information

Catalog Number:

20348-1-AP

Size:

150ul, Concentration: 800 ug/ml by Nanodrop and 433 ug/ml by Bradford method using BSA as the standard;

Source:

Rabbit

Isotype:

IgG

Immunogen Catalog Number:

AG14156

GenBank Accession Number:

BC060855

GeneID (NCBI):

57223

UNIPROT ID:

Q5MIZ7

Full Name:

SMEK homolog 2, suppressor of mek1 (Dictyostelium)

Calculated MW:

849 aa, 97 kDa

Observed MW:

94-97 kDa, 87 kDa

Purification Method:

Antigen affinity purification

Recommended Dilutions:

WB 1:500-1:3000

IHC 1:20-1:200

IF/ICC 1:20-1:200

Applications

Tested Applications:

WB, IHC, IF/ICC, ELISA

Cited Applications:

WB

Species Specificity:

human, mouse, rat

Cited Species:

human

Note-IHC: suggested antigen retrieval with TE buffer pH 9.0; (*) Alternatively, antigen retrieval may be performed with citrate buffer pH 6.0

Positive Controls:

WB : HEK-293 cells, A2780 cells, HeLa cells, MCF-7 cells

IHC : human cervical cancer tissue,

IF/ICC : HEK-293 cells,

Notable Publications

Author	Pubmed ID	Journal	Application
Shujuan Tong	32565934	Oncol Lett	WB
Zhengwei Liang	38513962	Exp Cell Res	WB

Storage

Storage:

Store at -20°C. Stable for one year after shipment.

Storage Buffer:

PBS with 0.02% sodium azide and 50% glycerol pH 7.3.

Aliquoting is unnecessary for -20°C storage

*** 20ul sizes contain 0.1% BSA

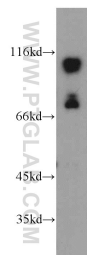
For technical support and original validation data for this product please contact:

T: 1 (888) 4PTGLAB (1-888-478-4522) (toll free in USA), or 1(312) 455-8498 (outside USA)

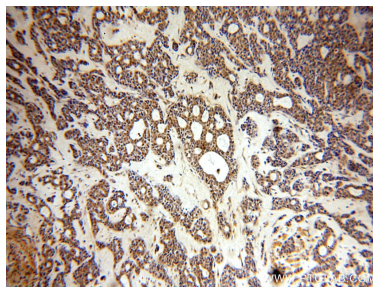
E: proteintech@ptglab.com
W: ptglab.com

This product is exclusively available under Proteintech Group brand and is not available to purchase from any other manufacturer.

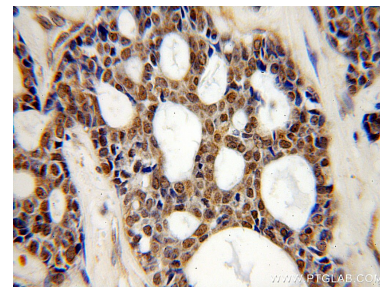
Selected Validation Data



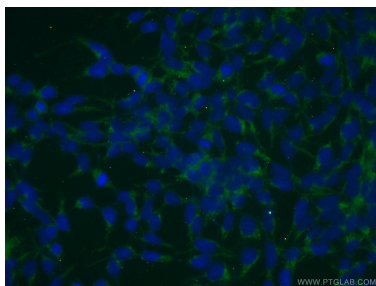
HEK-293 cells were subjected to SDS PAGE followed by western blot with 20348-1-AP (SMEK2 antibody) at dilution of 1:500 incubated at room temperature for 1.5 hours.



Immunohistochemical analysis of paraffin-embedded human cervical cancer using 20348-1-AP (SMEK2 antibody) at dilution of 1:100 (under 10x lens).



Immunohistochemical analysis of paraffin-embedded human cervical cancer using 20348-1-AP (SMEK2 antibody) at dilution of 1:100 (under 40x lens).



Immunofluorescent analysis of (-20°C Ethanol) fixed HEK-293 cells using 20348-1-AP (SMEK2 antibody) at dilution of 1:50 and Alexa Fluor 488-conjugated Goat Anti-Rabbit IgG(H+L).