

For Research Use Only

SLC1A5/ASCT2 Polyclonal antibody



Catalog Number: 20350-1-AP

Featured Product

15 Publications

Basic Information

Catalog Number: 20350-1-AP	GenBank Accession Number: BC000062	Purification Method: Antigen affinity purification
Size: 150ul , Concentration: 500 µg/ml by Nanodrop;	GeneID (NCBI): 6510	Recommended Dilutions: WB 1:2000-1:16000 IHC 1:400-1:1600 IF 1:50-1:500
Source: Rabbit	UNIPROT ID: Q15758	
Isotype: IgG	Full Name: solute carrier family 1 (neutral amino acid transporter), member 5	
Immunogen Catalog Number: AG14182	Calculated MW: 541 aa, 57 kDa	
	Observed MW: 55-70 kDa	

Applications

Tested Applications:
FC, IF, IHC, WB, ELISA

Cited Applications:
WB, IHC, IF

Species Specificity:
human, mouse

Cited Species:
human, mouse

Note-IHC: suggested antigen retrieval with TE buffer pH 9.0; (*) Alternatively, antigen retrieval may be performed with citrate buffer pH 6.0

Positive Controls:

WB : HeLa cells,

IHC : human colon cancer tissue, human stomach cancer tissue

IF : mouse small intestine tissue, HEK-293 cells

Background Information

SLC1A5 (Solute Carrier Family 1, member 5), also named as ASCT2, a major glutamine transporter belonging to the SLC1 family and localized in the plasma membrane of several body districts. Consistent with the functions exerted by glutamine, SLC1A5 is involved in uptake of essential amino acids, activation of mTORC1 and glutamine-dependent tumor cell survival and growth. SLC1A5 is highly expressed in various malignancies and plays a critical role in the transformation, growth and survival of cancer cells (PMID: 30234109). High SLC1A5 expression is associated with poor prognosis in clear-cell renal cell carcinoma (PMID: 26599282).

Notable Publications

Author	Pubmed ID	Journal	Application
Jun Inoue	33294587	Mol Ther Oncolytics	WB
Yan Hu	34726238	Biosci Rep	WB
Di Ye	34006301	J Exp Clin Cancer Res	WB

Storage

Storage:

Store at -20°C. Stable for one year after shipment.

Storage Buffer:

PBS with 0.02% sodium azide and 50% glycerol pH 7.3.

Aliquoting is unnecessary for -20°C storage

*** 20ul sizes contain 0.1% BSA

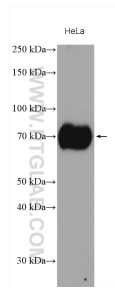
For technical support and original validation data for this product please contact:

T: 1 (888) 4PTGLAB (1-888-478-4522) (toll free in USA), or 1(312) 455-8498 (outside USA)

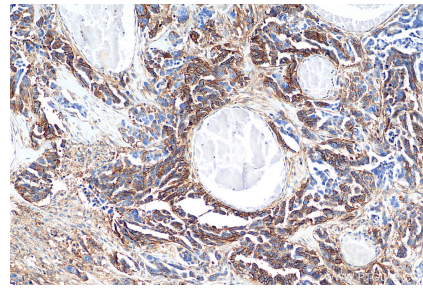
E: proteintech@ptglab.com
W: ptglab.com

This product is exclusively available under Proteintech Group brand and is not available to purchase from any other manufacturer.

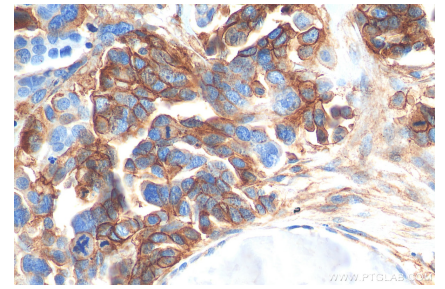
Selected Validation Data



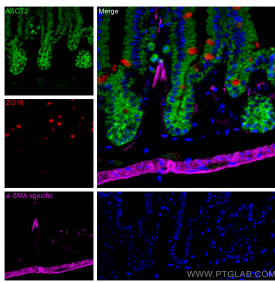
HeLa cells were subjected to SDS PAGE followed by western blot with 20350-1-AP (SLC1A5/ASCT2 antibody) at dilution of 1:8000 incubated at room temperature for 1.5 hours.



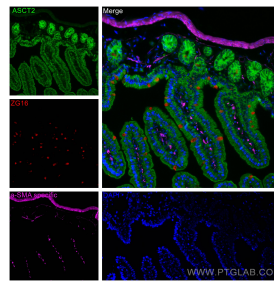
Immunohistochemical analysis of paraffin-embedded human colon cancer tissue slide using 20350-1-AP (SLC1A5/ASCT2 antibody) at dilution of 1:800 (under 10x lens). Heat mediated antigen retrieval with Tris-EDTA buffer (pH 9.0).



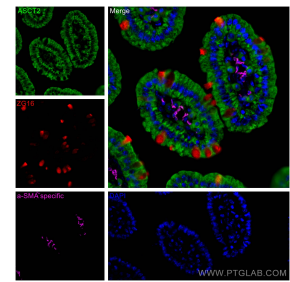
Immunohistochemical analysis of paraffin-embedded human colon cancer tissue slide using 20350-1-AP (ASCT2 antibody) at dilution of 1:800 (under 40x lens). Heat mediated antigen retrieval with Tris-EDTA buffer (pH 9.0).



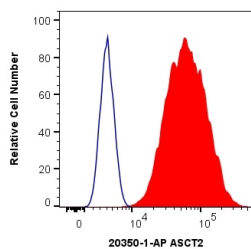
Immunofluorescent analysis of (4% PFA) fixed mouse small intestine tissue using ASCT2 antibody (20350-1-AP) at dilution of 1:200 and CoraLite®488-Conjugated AffiniPure Goat Anti-Rabbit IgG(H+L), ZG16 antibody (67389-1-Ig, Clone: 1A7B9, red), CoraLite®594 smooth muscle actin specific antibody (CL594-80008, Clone: 5H7, Magenta).



Immunofluorescent analysis of (4% PFA) fixed mouse small intestine tissue using SLC1A5/ASCT2 antibody (20350-1-AP) at dilution of 1:200 and CoraLite®488-Conjugated AffiniPure Goat Anti-Rabbit IgG(H+L), ZG16 antibody (67389-1-Ig, Clone: 1A7B9, red), CoraLite®594 smooth muscle actin specific antibody (CL594-80008, Clone: 5H7, Magenta).



Immunofluorescent analysis of (4% PFA) fixed mouse small intestine tissue using ASCT2 antibody (20350-1-AP) at dilution of 1:200 and CoraLite®488-Conjugated AffiniPure Goat Anti-Rabbit IgG(H+L), ZG16 antibody (67389-1-Ig, Clone: 1A7B9, red), CoraLite®594 smooth muscle actin specific antibody (CL594-80008, Clone: 5H7, Magenta).



1×10^6 HeLa cells were intracellularly stained with 0.4 ug Anti-Human SLC1A5/ASCT2 (20350-1-AP) and CoraLite®488-Conjugated AffiniPure Goat Anti-Rabbit IgG(H+L) at dilution 1:1000 (red), or 0.4 ug Isotype Control. Cells were fixed with 4% PFA and permeabilized with Flow Cytometry Perm Buffer (PF00011-C).