

For Research Use Only

MCT2/SLC16A7 Polyclonal antibody

Catalog Number: 20355-1-AP

7 Publications



Basic Information

Catalog Number:

20355-1-AP

Size:

150ul, Concentration: 750 ug/ml by Nanodrop;

Source:

Rabbit

Isotype:

IgG

Immunogen Catalog Number:

AG14201

GenBank Accession Number:

BC030693

GeneID (NCBI):

9194

UNIPROT ID:

O60669

Full Name:

solute carrier family 16, member 7 (monocarboxylic acid transporter 2)

Calculated MW:

478 aa, 52 kDa

Observed MW:

40-52 kDa

Purification Method:

Antigen affinity purification

Recommended Dilutions:

WB 1:500-1:1000

IHC 1:50-1:500

Applications

Tested Applications:

WB, IHC, ELISA

Cited Applications:

WB, IHC, IF

Species Specificity:

human, mouse

Cited Species:

human, mouse, rat

Positive Controls:

WB : SH-SY5Y cells, HEK-293 cells, K-562 cells

IHC : mouse heart tissue,

Note-IHC: suggested antigen retrieval with TE buffer pH 9.0; (*) Alternatively, antigen retrieval may be performed with citrate buffer pH 6.0

Background Information

SLC16A7, also named MCT2, is a proton-coupled monocarboxylate transporter catalyzing the rapid transport across the plasma membrane of many monocarboxylates. It has been reported that SLC16A7 is the primary monocarboxylate transporter in Purkinje cells and can be detected in the brain, cerebellum, liver, and kidney, but not in vascular smooth muscle cells, pericytes, endothelium, heart, lung, or stomach. There are some isoforms of SLC16A7 with bands around 52 kDa and 40-45 kDa in SDS-PAGE. The 80 kDa protein might be the dimer similar to the papers published. (PMID: 9482213, 15749979, 11291733, 16901736)

Notable Publications

Author	Pubmed ID	Journal	Application
Wiktorja Blaszcak	35840734	Br J Cancer	WB
Shuohui Dong	34998404	J Exp Clin Cancer Res	WB
Xiaorong Yu	34234890	Anim Cells Syst (Seoul)	WB, IF

Storage

Storage:

Store at -20°C. Stable for one year after shipment.

Storage Buffer:

PBS with 0.02% sodium azide and 50% glycerol pH 7.3.

Aliquoting is unnecessary for -20°C storage

*** 20ul sizes contain 0.1% BSA

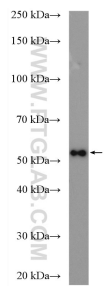
For technical support and original validation data for this product please contact:

T: 1 (888) 4PTGLAB (1-888-478-4522) (toll free in USA), or 1(312) 455-8498 (outside USA)

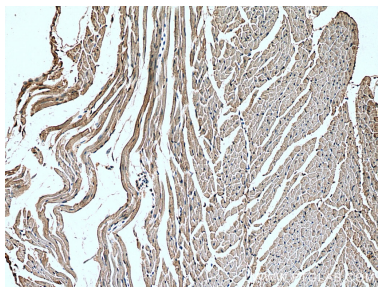
E: proteintech@ptglab.com
W: ptglab.com

This product is exclusively available under Proteintech Group brand and is not available to purchase from any other manufacturer.

Selected Validation Data



SH-SY5Y cells were subjected to SDS PAGE followed by western blot with 20355-1-AP (MCT2 antibody) at dilution of 1:500 incubated at room temperature for 1.5 hours.



Immunohistochemical analysis of paraffin-embedded mouse heart tissue slide using 20355-1-AP (MCT2 antibody) at dilution of 1:200 (under 10x lens). Heat mediated antigen retrieval with Tris-EDTA buffer (pH 9.0).