

For Research Use Only

MYOM1-Specific Polyclonal antibody



Catalog Number: 20360-1-AP

5 Publications

Basic Information

Catalog Number: 20360-1-AP	GenBank Accession Number: NM_003803	Purification Method: Antigen affinity purification
Size: 150ul , Concentration: 700 µg/ml by Nanodrop and 267 µg/ml by Bradford method using BSA as the standard;	GeneID (NCBI): 8736	Recommended Dilutions: WB 1:1000-1:4000 IHC 1:20-1:200 IF 1:50-1:500
Source: Rabbit	Full Name: myomesin 1, 185kDa	
Isotype: IgG	Calculated MW: 188 kDa	
	Observed MW: 190 kDa	

Applications

Tested Applications:

IF, IHC, WB, ELISA

Cited Applications:

IF, IHC, RIP, WB

Species Specificity:

human, mouse, rat

Cited Species:

rat, mouse

Note-IHC: suggested antigen retrieval with TE buffer pH 9.0; (*) Alternatively, antigen retrieval may be performed with citrate buffer pH 6.0

Positive Controls:

WB : mouse heart tissue, mouse skeletal muscle tissue, rat heart tissue, rat skeletal muscle tissue

IHC : human skeletal muscle tissue, human heart tissue

IF : mouse skeletal muscle tissue, C2C12 cell, mouse heart tissue

Background Information

MYOM1 is a major component of the vertebrate myofibrillar M band. MYOM1 binds myosin, titin, and light meromyosin. This binding is dose-dependent. The antibody is specific to MYOM1.

Notable Publications

Author	Pubmed ID	Journal	Application
Kosmas Kosmas	36142826	Int J Mol Sci	IF
Xiaoli Zhang, Ze	34622152	iScience	WB,RIP
Catarina Rippe	28465505	Sci Rep	WB

Storage

Storage:

Store at -20°C. Stable for one year after shipment.

Storage Buffer:

PBS with 0.02% sodium azide and 50% glycerol pH 7.3.

Aliquoting is unnecessary for -20°C storage

*** 20ul sizes contain 0.1% BSA

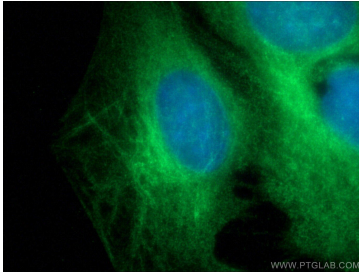
For technical support and original validation data for this product please contact:

T: 1 (888) 4PTGLAB (1-888-478-4522) (toll free in USA), or 1(312) 455-8498 (outside USA)

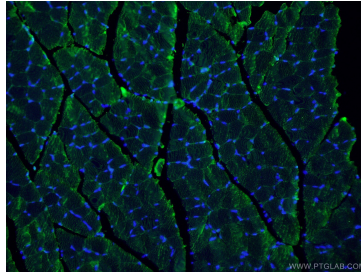
E: proteintech@ptglab.com
W: ptglab.com

This product is exclusively available under Proteintech Group brand and is not available to purchase from any other manufacturer.

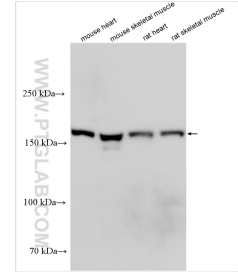
Selected Validation Data



Immunofluorescent analysis of (-20°C Ethanol) fixed C2C12 cell using 20360-1-AP (MYOM1-Specific antibody) at dilution of 1:50 and Alexa Fluor 488-Conjugated AffiniPure Goat Anti-Rabbit IgG(H+L).



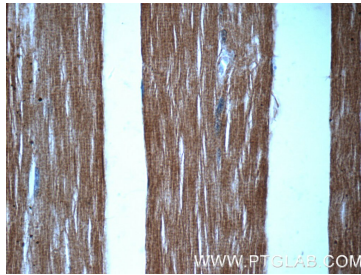
Immunofluorescent analysis of (4% PFA) fixed mouse skeletal muscle tissue using 20360-1-AP (MYOM1-Specific antibody) at dilution of 1:100 and Alexa Fluor 488-Conjugated AffiniPure Goat Anti-Rabbit IgG(H+L).



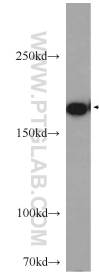
Various lysates were subjected to SDS PAGE followed by western blot with 20360-1-AP (MYOM1-Specific antibody) at dilution of 1:2000 incubated at room temperature for 1.5 hours.



Immunohistochemical analysis of paraffin-embedded human skeletal muscle tissue slide using 20360-1-AP (MYOM1-Specific Antibody) at dilution of 1:50 (under 10x lens).



Immunohistochemical analysis of paraffin-embedded human skeletal muscle tissue slide using 20360-1-AP (MYOM1-Specific Antibody) at dilution of 1:50 (under 40x lens).



mouse skeletal muscle tissue were subjected to SDS PAGE followed by western blot with 20360-1-AP (MYOM1-Specific antibody) at dilution of 1:600 incubated at room temperature for 1.5 hours.