

For Research Use Only

POLR2B-Specific Polyclonal antibody



Catalog Number: 20370-1-AP

2 Publications

Basic Information

Catalog Number: 20370-1-AP	GenBank Accession Number: NM_000938	Purification Method: Antigen affinity purification
Size: 150ul , Concentration: 400 µg/ml by Nanodrop and 213 µg/ml by Bradford method using BSA as the standard;	GeneID (NCBI): 5431	Recommended Dilutions: WB 1:500-1:2000 IP 0.5-4.0 ug for IP and 1:200-1:1000 for WB
Source: Rabbit	Full Name: polymerase (RNA) II (DNA directed) polypeptide B, 140kDa	Calculated MW: 134 kDa
Isotype: IgG	Observed MW: 140 kDa	IHC 1:20-1:200

Applications

Tested Applications: IHC, IP, WB, ELISA	Positive Controls: WB : A431 cells, HeLa cells
Cited Applications: ChIP, WB	IP : HeLa cells,
Species Specificity: human, mouse, rat	IHC : human brain tissue,
Cited Species: human	

Note-IHC: suggested antigen retrieval with TE buffer pH 9.0; (*) Alternatively, antigen retrieval may be performed with citrate buffer pH 6.0

Background Information

POLR2B belongs to the RNA polymerase beta chain family. It is a DNA-dependent RNA polymerase which catalyzes the transcription of DNA into RNA using the four ribonucleoside triphosphates as substrates. It is the second largest component of RNA polymerase II which synthesizes mRNA precursors and many functional non-coding RNAs. POLR2B proposed to contribute to the polymerase catalytic activity and forms the polymerase active center together with the largest subunit. Pol II is the central component of the basal RNA polymerase II transcription machinery. It is composed of mobile elements that move relative to each other. RPB2 is part of the core element with the central large cleft, the clamp element that moves to open and close the cleft and the jaws that are thought to grab the incoming DNA template. The antibody is specific to POLR2B.

Notable Publications

Author	Pubmed ID	Journal	Application
Huan-Yu Zhao	36328133	Biochem Pharmacol	ChIP
Hu Lei	31296070	Cancer Invest	WB

Storage

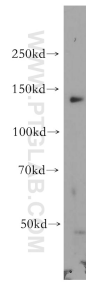
Storage:
Store at -20°C. Stable for one year after shipment.
Storage Buffer:
PBS with 0.02% sodium azide and 50% glycerol pH 7.3.
Aliquoting is unnecessary for -20°C storage

*** 20ul sizes contain 0.1% BSA

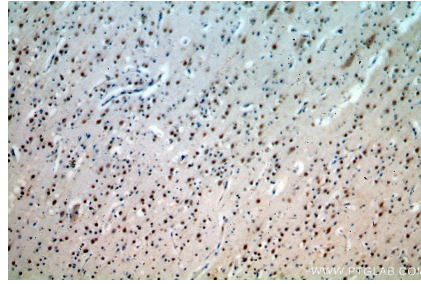
For technical support and original validation data for this product please contact:
T: 1 (888) 4PTGLAB (1-888-478-4522) (toll free in USA), or 1(312) 455-8498 (outside USA)
E: proteintech@ptglab.com
W: ptglab.com

This product is exclusively available under Proteintech Group brand and is not available to purchase from any other manufacturer.

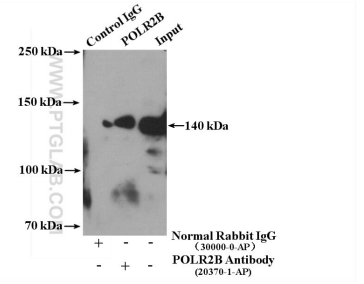
Selected Validation Data



A431 cells were subjected to SDS PAGE followed by western blot with 20370-1-AP (POLR2B-Specific antibody) at dilution of 1:500 incubated at room temperature for 1.5 hours.



Immunohistochemical analysis of paraffin-embedded human brain using 20370-1-AP (POLR2B-Specific antibody) at dilution of 1:400 (under 10x lens).



IP Result of anti-POLR2B-Specific (IP:20370-1-AP, 4ug; Detection:20370-1-AP 1:300) with HeLa cells lysate 3000ug.