

For Research Use Only

ATG4C Polyclonal antibody

Catalog Number: 20382-1-AP

2 Publications



Basic Information

Catalog Number:

20382-1-AP

Size:

150ul, Concentration: 240 µg/ml by Nanodrop and 240 µg/ml by Bradford method using BSA as the standard;

Source:

Rabbit

Isotype:

IgG

Immunogen Catalog Number:

AG14207

GenBank Accession Number:

BC033024

GeneID (NCBI):

84938

UNIPROT ID:

Q96DT6

Full Name:

ATG4 autophagy related 4 homolog C (S. cerevisiae)

Calculated MW:

458 aa, 52 kDa

Observed MW:

52-55 kDa

Purification Method:

Antigen affinity purification

Recommended Dilutions:

WB 1:200-1:1000

IHC 1:20-1:200

IF/ICC 1:200-1:800

Applications

Tested Applications:

WB, IF, IHC, ELISA

Cited Applications:

WB

Species Specificity:

human

Cited Species:

human, mouse

Note-IHC: suggested antigen retrieval with TE buffer pH 9.0; (*) Alternatively, antigen retrieval may be performed with citrate buffer pH 6.0

Positive Controls:

WB : Jurkat cells,

IHC : human heart tissue, human testis tissue

IF/ICC : HeLa cells,

Notable Publications

Author	Pubmed ID	Journal	Application
Wu Sun	32104496	Theranostics	WB
Isaac Tamargo-Gómez	37459465	Autophagy	WB

Storage

Storage:

Store at -20°C. Stable for one year after shipment.

Storage Buffer:

PBS with 0.02% sodium azide and 50% glycerol pH 7.3.

Aliquoting is unnecessary for -20°C storage

*** 20ul sizes contain 0.1% BSA

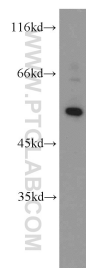
For technical support and original validation data for this product please contact:

T: 1 (888) 4PTGLAB (1-888-478-4522) (toll free in USA), or 1(312) 455-8498 (outside USA)

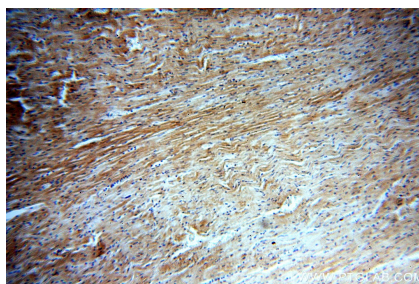
E: proteintech@ptglab.com
W: ptglab.com

This product is exclusively available under Proteintech Group brand and is not available to purchase from any other manufacturer.

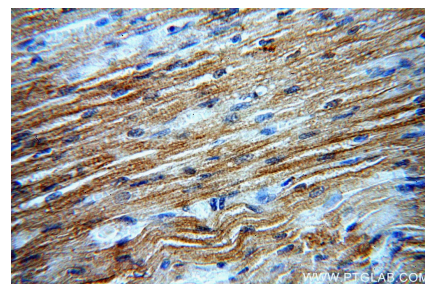
Selected Validation Data



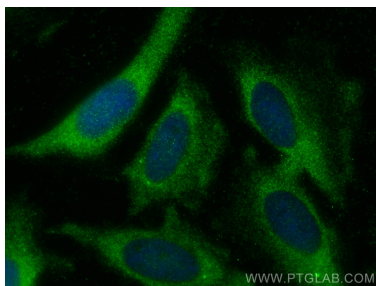
Jurkat cells were subjected to SDS PAGE followed by western blot with 20382-1-AP (ATG4C antibody) at dilution of 1:300 incubated at room temperature for 1.5 hours.



Immunohistochemical analysis of paraffin-embedded human heart using 20382-1-AP (ATG4C antibody) at dilution of 1:50 (under 10x lens).



Immunohistochemical analysis of paraffin-embedded human heart using 20382-1-AP (ATG4C antibody) at dilution of 1:50 (under 40x lens).



Immunofluorescent analysis of (-20°C Methanol) fixed HeLa cells using ATG4C antibody (20382-1-AP) at dilution of 1:400 and CoraLite®488-Conjugated AffiniPure Goat Anti-Rabbit IgG(H+L).