

# PLEKHF1 Polyclonal antibody

Catalog Number: 20389-1-AP

Featured Product

2 Publications

## Basic Information

<b>Catalog Number:</b> 20389-1-AP	<b>GenBank Accession Number:</b> BC002744	<b>Purification Method:</b> Antigen affinity purification
<b>Size:</b> 150ul, Concentration: 300 µg/ml by Nanodrop and 247 µg/ml by Bradford method using BSA as the standard;	<b>GeneID (NCBI):</b> 79156	<b>Recommended Dilutions:</b> WB 1:500-1:1000 IHC 1:20-1:200 IF 1:10-1:100
<b>Source:</b> Rabbit	<b>Full Name:</b> pleckstrin homology domain containing, family F (with FYVE domain) member 1	
<b>Isotype:</b> IgG	<b>Calculated MW:</b> 279 aa, 31 kDa	
<b>Immunogen Catalog Number:</b> AG14228	<b>Observed MW:</b> 31 kDa	

## Applications

<b>Tested Applications:</b> IF, IHC, WB, ELISA	<b>Positive Controls:</b>
<b>Cited Applications:</b> IF, WB	<b>WB:</b> human skeletal muscle tissue, human kidney tissue, mouse lung tissue, mouse skeletal muscle tissue, mouse spleen tissue, mouse thymus tissue
<b>Species Specificity:</b> human, mouse	<b>IHC:</b> human brain tissue,
<b>Cited Species:</b> human, mouse	<b>IF:</b> HepG2 cells,
<b>Note-IHC: suggested antigen retrieval with TE buffer pH 9.0; (*) Alternatively, antigen retrieval may be performed with citrate buffer pH 6.0</b>	

## Background Information

PLEKHF1, also named as APPD, LAPF, and ZFYVE15, is a 279 amino acid protein, which contains one PH domain and one FYVE-type zinc finger. PLEKHF1 translocates to lysosome during apoptosis, localizing in the nucleus and cytoplasm. PLEKHF1 is highly expressed in heart and skeletal muscle and weakly expressed in brain, thymus, spleen, kidney, liver, small intestine, placenta and lung. PLEKHF1 may induce apoptosis through the lysosomal-mitochondrial pathway. PLEKHF1 modulates the protein content of the plasma membrane and was involved in different endocytosis events.

## Notable Publications

Author	Pubmed ID	Journal	Application
Natrajan Rachael R	22433433	Breast Cancer Res	WB
Lifeng Yan	37340175	Sci China Life Sci	WB, IF

## Storage

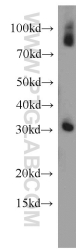
**Storage:**  
Store at -20°C. Stable for one year after shipment.  
**Storage Buffer:**  
PBS with 0.02% sodium azide and 50% glycerol pH 7.3.  
Aliquoting is unnecessary for -20°C storage

\*\*\* 20ul sizes contain 0.1% BSA

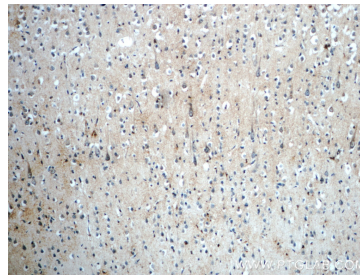
For technical support and original validation data for this product please contact:  
T: 1 (888) 4PTGLAB (1-888-478-4522) (toll free in USA), or 1(312) 455-8498 (outside USA)  
E: [proteintech@ptglab.com](mailto:proteintech@ptglab.com)  
W: [ptglab.com](http://ptglab.com)

This product is exclusively available under Proteintech Group brand and is not available to purchase from any other manufacturer.

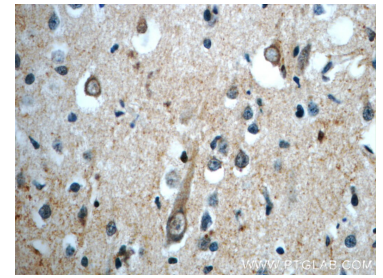
## Selected Validation Data



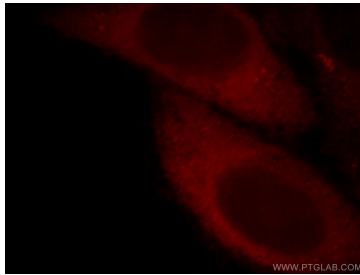
human skeletal muscle tissue were subjected to SDS PAGE followed by western blot with 20389-1-AP (PLEKHF1 antibody) at dilution of 1:500 incubated at room temperature for 1.5 hours.



Immunohistochemical analysis of paraffin-embedded human brain slide using 20389-1-AP (PLEKHF1 Antibody) at dilution of 1:50.



Immunohistochemical analysis of paraffin-embedded human brain slide using 20389-1-AP (PLEKHF1 Antibody) at dilution of 1:50.



Immunofluorescent analysis of HepG2 cells, using PLEKHF1 antibody 20389-1-AP at 1:25 dilution and Rhodamine-labeled goat anti-rabbit IgG (red).