

For Research Use Only

CCDC158 Polyclonal antibody

Catalog Number: 20396-1-AP

1 Publications



Basic Information

Catalog Number:

20396-1-AP

Size:

150ul, Concentration: 400 ug/ml by Nanodrop and 207 ug/ml by Bradford method using BSA as the standard;

Source:

Rabbit

Isotype:

IgG

Immunogen Catalog Number:

AG14049

GenBank Accession Number:

BC035224

GeneID (NCBI):

339965

UNIPROT ID:

Q5M9N0

Full Name:

coiled-coil domain containing 158

Calculated MW:

1113 aa, 127 kDa

Observed MW:

127-140 kDa

Purification Method:

Antigen affinity purification

Recommended Dilutions:

WB 1:500-1:2000

IP 0.5-4.0 ug for 1.0-3.0 mg of total protein lysate

IHC 1:20-1:200

Applications

Tested Applications:

WB, IP, IHC, ELISA

Cited Applications:

IHC, IF

Species Specificity:

human, mouse

Cited Species:

human

Note-IHC: suggested antigen retrieval with TE buffer pH 9.0; (*) Alternatively, antigen retrieval may be performed with citrate buffer pH 6.0

Positive Controls:

WB : mouse testis tissue, human testis tissue

IP : mouse testis tissue,

IHC : human kidney tissue, human testis tissue

Notable Publications

Author	Pubmed ID	Journal	Application
Tjessa Bondue	39319391	J Cell Physiol	IHC,IF

Storage

Storage:

Store at -20°C. Stable for one year after shipment.

Storage Buffer:

PBS with 0.02% sodium azide and 50% glycerol pH 7.3.

Aliquoting is unnecessary for -20°C storage

*** 20ul sizes contain 0.1% BSA

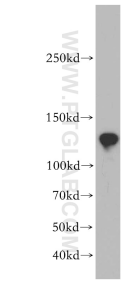
For technical support and original validation data for this product please contact:

T: 1 (888) 4PTGLAB (1-888-478-4522) (toll free in USA), or 1(312) 455-8498 (outside USA)

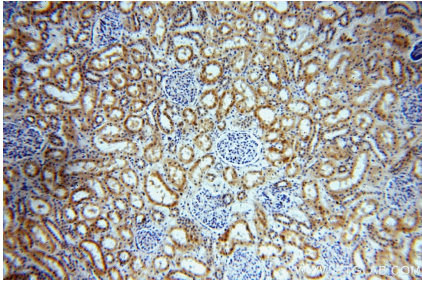
E: proteintech@ptglab.com
W: ptglab.com

This product is exclusively available under Proteintech Group brand and is not available to purchase from any other manufacturer.

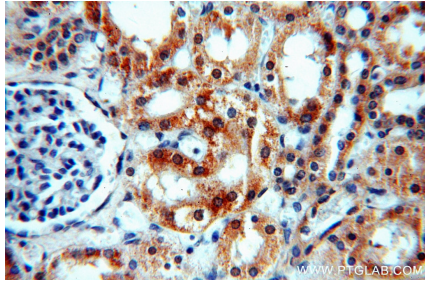
Selected Validation Data



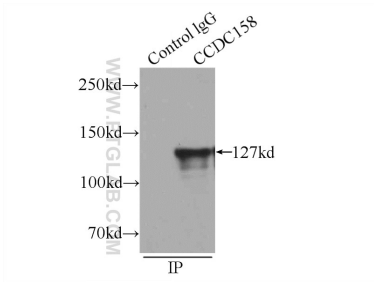
mouse testis tissue were subjected to SDS PAGE followed by western blot with 20396-1-AP (CCDC158 antibody) at dilution of 1:500 incubated at room temperature for 1.5 hours.



Immunohistochemical analysis of paraffin-embedded human kidney using 20396-1-AP (CCDC158 antibody) at dilution of 1:100 (under 10x lens).



Immunohistochemical analysis of paraffin-embedded human kidney using 20396-1-AP (CCDC158 antibody) at dilution of 1:100 (under 40x lens).



IP result of anti-CCDC158 (IP:20396-1-AP, 4ug; Detection:20396-1-AP 1:500) with mouse testis tissue lysate 6000ug.