

For Research Use Only

SNRPE Polyclonal antibody

Catalog Number: 20407-1-AP **2 Publications**



Basic Information

Catalog Number: 20407-1-AP	GenBank Accession Number: BC002639	Purification Method: Antigen affinity purification
Size: 150ul , Concentration: 200 µg/ml by Nanodrop and 120 µg/ml by Bradford method using BSA as the standard;	GeneID (NCBI): 6635	Recommended Dilutions: WB 1:500-1:1000 IHC 1:50-1:500
Source: Rabbit	Full Name: small nuclear ribonucleoprotein polypeptide E	
Isotype: IgG	Calculated MW: 92 aa, 11 kDa	
Immunogen Catalog Number: AG14227	Observed MW: 11 kDa	

Applications

Tested Applications: IHC, WB, ELISA	Positive Controls:
Cited Applications: IF, IHC, WB	WB : mouse placenta tissue, human placenta tissue, human brain tissue
Species Specificity: human, mouse, rat	IHC : mouse brain tissue, human hepatocirrhosis tissue
Cited Species: human	

Note-IHC: suggested antigen retrieval with TE buffer pH 9.0; (*) Alternatively, antigen retrieval may be performed with citrate buffer pH 6.0

Background Information

The snRNP E (SNRPE) protein is one of several proteins associated with the U family of small nuclear RNAs that are involved in RNA processing. It functions in the U7 snRNP complex that is involved in histone 3'-end processing and also associated with snRNP U1, U2, U4/U6 and U5. This antibody raises against the full length of human SNRPE, and can recognize two bands of SNRPE, include a 9 kDa band(isoform) and a 11kDa band(SNRPE)

Notable Publications

Author	Pubmed ID	Journal	Application
Elena Martínez-Terroba	29756233	J Pathol	WB,IHC
Sandra M Pasternack	23246290	Am J Hum Genet	IF

Storage

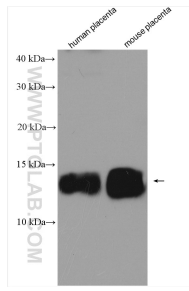
Storage:
Store at -20°C. Stable for one year after shipment.
Storage Buffer:
PBS with 0.02% sodium azide and 50% glycerol pH 7.3.
Aliquoting is unnecessary for -20°C storage

*** 20ul sizes contain 0.1% BSA

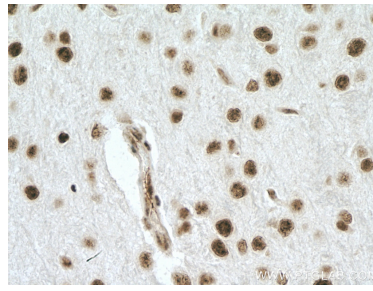
For technical support and original validation data for this product please contact:
T: 1 (888) 4PTGLAB (1-888-478-4522) (toll free in USA), or 1(312) 455-8498 (outside USA)
E: proteintech@ptglab.com
W: ptglab.com

This product is exclusively available under Proteintech Group brand and is not available to purchase from any other manufacturer.

Selected Validation Data



Various lysates were subjected to SDS PAGE followed by western blot with 20407-1-AP (SNRPE antibody) at dilution of 1:600 incubated at room temperature for 1.5 hours.



Immunohistochemical analysis of paraffin-embedded mouse brain tissue slide using 20407-1-AP (SNRPE antibody) at dilution of 1:200 (under 40x lens. Heat mediated antigen retrieval with Tris-EDTA buffer (pH 9.0).