

For Research Use Only

SPP Polyclonal antibody

Catalog Number: 20416-1-AP

Featured Product

3 Publications



Basic Information

Catalog Number:
20416-1-AP

Size:
150ul, Concentration: 133 µg/ml by Bradford method using BSA as the standard;

Source:
Rabbit

Isotype:
IgG

Immunogen Catalog Number:
AG14158

GenBank Accession Number:
BC008938

GeneID (NCBI):
81502

Full Name:
histocompatibility (minor) 13

Calculated MW:
377 aa, 41 kDa

Observed MW:
45 kDa, 100 kDa

Purification Method:
Antigen affinity purification

Recommended Dilutions:
WB 1:500-1:2000
IHC 1:20-1:200

Applications

Tested Applications:
IHC, WB, ELISA

Cited Applications:
IHC, WB

Species Specificity:
human, mouse

Cited Species:
human

Note-IHC: suggested antigen retrieval with TE buffer pH 9.0; (*) Alternatively, antigen retrieval may be performed with citrate buffer pH 6.0

Positive Controls:

WB: HEK-293 cells, mouse liver tissue, mouse kidney tissue, U2OS cells

IHC: human hepatocirrhosis tissue,

Background Information

Notable Publications

Author	Pubmed ID	Journal	Application
Haiyan Yang	36153332	Cell Death Dis	IHC, WB
Schedin-Weiss Sophia S	23717518	PLoS One	
Jun Liu	36046831	Front Pharmacol	WB

Storage

Storage:

Store at -20°C. Stable for one year after shipment.

Storage Buffer:

PBS with 0.02% sodium azide and 50% glycerol pH 7.3.

Aliquoting is unnecessary for -20°C storage

*** 20ul sizes contain 0.1% BSA

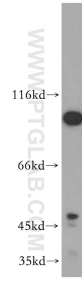
For technical support and original validation data for this product please contact:

T: 1 (888) 4PTGLAB (1-888-478-4522) (toll free in USA), or 1(312) 455-8498 (outside USA)

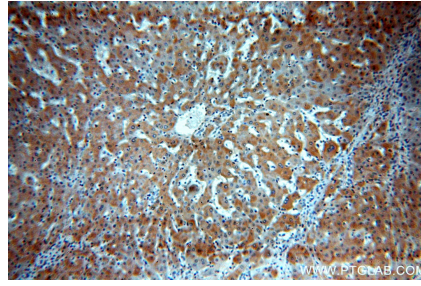
E: proteintech@ptglab.com
W: ptglab.com

This product is exclusively available under Proteintech Group brand and is not available to purchase from any other manufacturer.

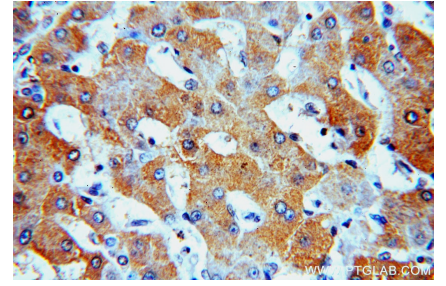
Selected Validation Data



HEK-293 cells were subjected to SDS PAGE followed by western blot with 20416-1-AP (SPP antibody) at dilution of 1:300 incubated at room temperature for 1.5 hours.



Immunohistochemical analysis of paraffin-embedded human hepatocirrhosis using 20416-1-AP (SPP antibody) at dilution of 1:100 (under 10x lens).



Immunohistochemical analysis of paraffin-embedded human hepatocirrhosis using 20416-1-AP (SPP antibody) at dilution of 1:100 (under 40x lens).