

PSEN1 Polyclonal antibody

Catalog Number: 20434-1-AP

1 Publications

Basic Information

Catalog Number:

20434-1-AP

Size:

150ul, Concentration: 287 µg/ml by Bradford method using BSA as the standard;

Source:

Rabbit

Isotype:

IgG

Immunogen Catalog Number:

AG14135

GenBank Accession Number:

BC011729

GeneID (NCBI):

5663

UNIPROT ID:

P49768

Full Name:

presenilin 1

Calculated MW:

467 aa, 53 kDa

Observed MW:

18 kDa

Purification Method:

Antigen affinity purification

Recommended Dilutions:

IHC 1:50-1:200

IF/ICC 1:50-1:500

Applications

Tested Applications:

IF, IHC, ELISA

Cited Applications:

IF

Species Specificity:

human, mouse

Cited Species:

mouse

Note-IHC: suggested antigen retrieval with *TE buffer pH 9.0*; (*) Alternatively, antigen retrieval may be performed with *citrate buffer pH 6.0*

Positive Controls:

IHC : human gliomas tissue, mouse brain tissue

IF/ICC : mouse brain tissue, HEK-293 cells

Background Information

PSEN1(presenilin-1) is also named as AD3, PS1, PSNL1 and belongs to the peptidase A22A family. It directly influences Netrin/DCC signaling with cell type precision and spatiotemporal specificity, and is a key neural circuit builder that gates the spatiotemporal pattern of guidance signaling, thereby ensuring neural projections occur with high fidelity(PMID:21215373). The 46-kDa PSEN1 holoprotein is cleaved into a ~30-kDa N-terminal fragment (NTF) and a ~20-kDa C-terminal fragment (CTF) by the 26S proteasome(PMID:10527805). It has 7 isoforms produced by alternative splicing. This antibody can recognize all the isoforms except isoform 4 (21 kDa).

Notable Publications

Author	Pubmed ID	Journal	Application
Zequan Yin	33328962	Front Aging Neurosci	IF

Storage

Storage:

Store at -20°C. Stable for one year after shipment.

Storage Buffer:

PBS with 0.02% sodium azide and 50% glycerol pH 7.3.

Aliquoting is unnecessary for -20°C storage

***** 20ul sizes contain 0.1%BSA**

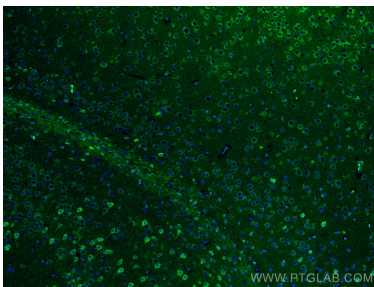
For technical support and original validation data for this product please contact:

T: 1 (888) 4PTGLAB (1-888-478-4522) (toll free in USA), or 1(312) 455-8498 (outside USA)

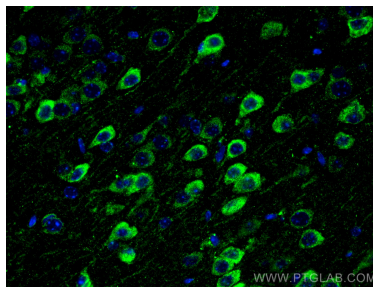
E: proteintech@ptglab.com
W: ptglab.com

This product is exclusively available under Proteintech Group brand and is not available to purchase from any other manufacturer.

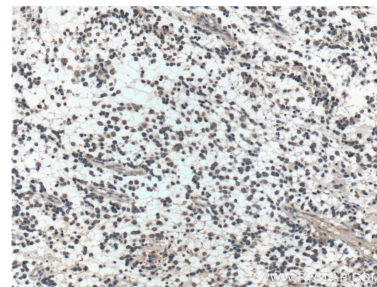
Selected Validation Data



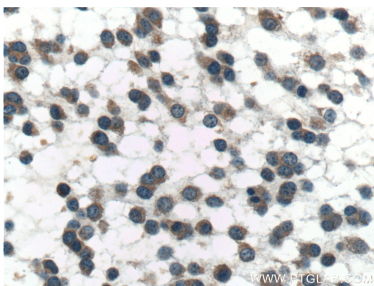
Immunofluorescent analysis of (4% PFA) fixed mouse brain tissue using PSEN1 antibody (20434-1-AP) at dilution of 1:200 and CoraLite®488-Conjugated AffiniPure Goat Anti-Rabbit IgG(H+L).



Immunofluorescent analysis of (4% PFA) fixed mouse brain tissue using PSEN1 antibody (20434-1-AP) at dilution of 1:200 and CoraLite®488-Conjugated AffiniPure Goat Anti-Rabbit IgG(H+L).



Immunohistochemical analysis of paraffin-embedded human gliomas tissue slide using 20434-1-AP (PSEN1 Antibody) at dilution of 1:100 (under 10x lens).



Immunohistochemical analysis of paraffin-embedded human gliomas tissue slide using 20434-1-AP (PSEN1 Antibody) at dilution of 1:100 (under 40x lens).