

For Research Use Only

GLUT2 Polyclonal antibody

Catalog Number: 20436-1-AP

Featured Product

89 Publications



Basic Information

Catalog Number:

20436-1-AP

Size:

150ul, Concentration: 650 ug/ml by Nanodrop;

Source:

Rabbit

Isotype:

IgG

Immunogen Catalog Number:

AG14204

GenBank Accession Number:

BC060041

GeneID (NCBI):

6514

UNIPROT ID:

P11168

Full Name:

solute carrier family 2 (facilitated glucose transporter), member 2

Calculated MW:

57 kDa

Observed MW:

60-70 kDa, 38-45 kDa

Purification Method:

Antigen affinity purification

Recommended Dilutions:

WB: 1:500-1:3000

IP: 0.5-4.0 ug for 1.0-3.0 mg of total protein lysate

IHC: 1:500-1:2000

Applications

Tested Applications:

WB, IHC, IP, ELISA

Cited Applications:

WB, IHC, IF

Species Specificity:

human, mouse, rat

Cited Species:

human, mouse, rat, pig, sheep, lasiopodomys brandtii

Note-IHC: suggested antigen retrieval with TE buffer pH 9.0; (*) Alternatively, antigen retrieval may be performed with citrate buffer pH 6.0

Positive Controls:

WB: Caco-2 cells, mouse kidney tissue, HEK 293 cells, HepG2 cells, NIH/3T3 cells, mouse liver tissue, rat liver tissue

IP: mouse kidney tissue,

IHC: mouse pancreas tissue,

Background Information

GLUT2 is a member of glucose transporters or GLUTs which catalyze the glucose transport across plasma membrane. GLUT2 is selectively expressed in hepatocytes, pancreatic beta cells, and absorptive renal and intestinal epithelial cells. GLUT2 is required to maintain normal glucose homeostasis and normal function and development of the endocrine pancreas. Its absence leads to symptoms characteristic of non-insulin-dependent diabetes mellitus. This antibody detected 60-70 kDa fully glycosylated, matured GLUT2 and a nonglycosylated form of GLUT2 around 38-45 kDa. (9354799, 12101013)

Notable Publications

Author	Pubmed ID	Journal	Application
Wei Xu	32935679	Food Funct	WB
Miao Liu	36063979	Life Sci	WB, IF
Yan Zhu	32875583	J Food Biochem	WB

Storage

Storage:

Store at -20°C. Stable for one year after shipment.

Storage Buffer:

PBS with 0.02% sodium azide and 50% glycerol, pH7.3

Aliquoting is unnecessary for -20°C storage

*** 20ul sizes contain 0.1% BSA

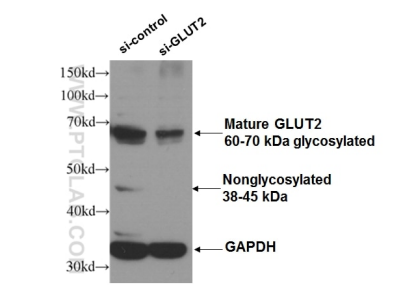
For technical support and original validation data for this product please contact:

T: 1 (888) 4PTGLAB (1-888-478-4522) (toll free in USA), or 1(312) 455-8498 (outside USA)

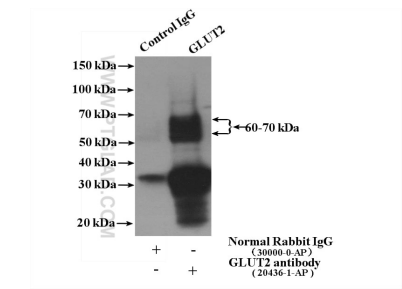
E: proteintech@ptglab.com
W: ptglab.com

This product is exclusively available under Proteintech Group brand and is not available to purchase from any other manufacturer.

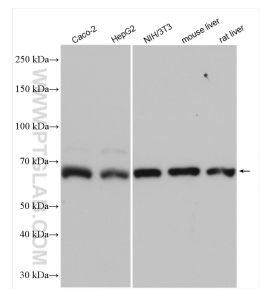
Selected Validation Data



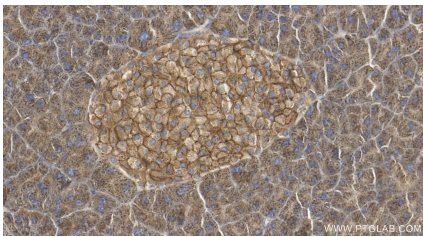
WB result of GLUT2 antibody (20436-1-AP, 1:300) with si-Control and si-GLUT2 transfected HEK 293 cells.



IP result of anti-GLUT2 (IP:20436-1-AP, 4ug; Detection:20436-1-AP 1:1000) with mouse kidney tissue lysate 4000ug.



Various lysates were subjected to SDS PAGE followed by western blot with 20436-1-AP (GLUT2 antibody) at dilution of 1:1500 incubated at room temperature for 1.5 hours.



Immunohistochemical analysis of paraffin-embedded mouse pancreas tissue slide using 20436-1-AP (GLUT2 antibody) at dilution of 1:1000 (under 40x lens). Heat mediated antigen retrieval with Tris-EDTA buffer (pH 9.0).