

For Research Use Only

CLK1 Polyclonal antibody

Catalog Number: 20439-1-AP

1 Publications



Basic Information

Catalog Number:

20439-1-AP

Size:

150ul , Concentration: 300 ug/ml by Nanodrop and 267 ug/ml by Bradford method using BSA as the standard;

Source:

Rabbit

Isotype:

IgG

Immunogen Catalog Number:

AG14214

GenBank Accession Number:

BC031549

GeneID (NCBI):

1195

UNIPROT ID:

P49759

Full Name:

CDC-like kinase 1

Calculated MW:

484 aa, 57 kDa

Observed MW:

62 kDa

Purification Method:

Antigen affinity purification

Recommended Dilutions:

WB 1:200-1:1000

IP 0.5-4.0 ug for 1.0-3.0 mg of total protein lysate

Applications

Tested Applications:

WB, IP, ELISA

Cited Applications:

WB

Species Specificity:

human, mouse, rat

Cited Species:

human

Positive Controls:

WB : COLO 320 cells, HeLa cells, HepG2 cells

IP : COLO 320 cells,

Notable Publications

Author	Pubmed ID	Journal	Application
Nan Zhang	39742274	Front Immunol	WB

Storage

Storage:

Store at -20°C. Stable for one year after shipment.

Storage Buffer:

PBS with 0.02% sodium azide and 50% glycerol pH 7.3.

Aliquoting is unnecessary for -20°C storage

*** 20ul sizes contain 0.1% BSA

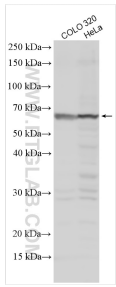
For technical support and original validation data for this product please contact:

T: 1 (888) 4PTGLAB (1-888-478-4522) (toll free in USA), or 1(312) 455-8498 (outside USA)

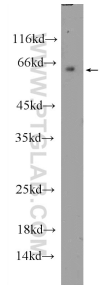
E: proteintech@ptglab.com
W: ptglab.com

This product is exclusively available under Proteintech Group brand and is not available to purchase from any other manufacturer.

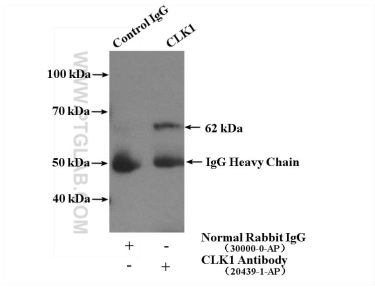
Selected Validation Data



Various lysates were subjected to SDS PAGE followed by western blot with 20439-1-AP (CLK1 antibody) at dilution of 1:400 incubated at room temperature for 1.5 hours.



HepG2 cells were subjected to SDS PAGE followed by western blot with 20439-1-AP (CLK1 Antibody) at dilution of 1:300 incubated at 4 degree celsius over night.



IP result of anti-CLK1 (IP:20439-1-AP, 4ug; Detection:20439-1-AP 1:300) with COLO 320 cells lysate 2000ug.