

For Research Use Only

CLK1 Polyclonal antibody, PBS Only

Catalog Number:20439-1-PBS



Basic Information

Catalog Number:

20439-1-PBS

Size:

100ug , Concentration: 1 mg/ml by Nanodrop;

Source:

Rabbit

Isotype:

IgG

Immunogen Catalog Number:

AG14214

GenBank Accession Number:

BC031549

GeneID (NCBI):

1195

UNIPROT ID:

P49759

Full Name:

CDC-like kinase 1

Calculated MW:

484 aa, 57 kDa

Observed MW:

62 kDa

Purification Method:

Antigen affinity purification

Applications

Tested Applications:

WB, IP, Indirect ELISA

Species Specificity:

human

Background Information

CLK1 (CDC-like kinase 1) is the dual specificity kinase acting on both serine/threonine and tyrosine-containing substrates. It phosphorylates serine- and arginine-rich (SR) proteins of the spliceosomal complex and may be a constituent of a network of regulatory mechanisms that enable SR proteins to control RNA splicing. It can phosphorylate: SRSF1, SRSF3 and PTPN1 (PMID: 10480872; 19168442). It also regulates the alternative splicing of tissue factor (F3) pre-mRNA in endothelial cells (PMID: 19168442). Elevated CLK1 activity is frequently detected in cancers, where it alters splice isoform balance to promote proliferation, invasion and chemoresistance, making it an emerging therapeutic target.

Storage

Storage:

Store at -80°C.

Storage Buffer:

PBS only, pH7.3

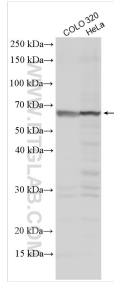
For technical support and original validation data for this product please contact:

T: 1 (888) 4PTGLAB (1-888-478-4522) (toll free in USA), or 1(312) 455-8498 (outside USA)

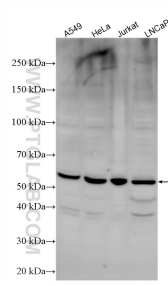
E: proteintech@ptglab.com
W: ptglab.com

This product is exclusively available under Proteintech Group brand and is not available to purchase from any other manufacturer.

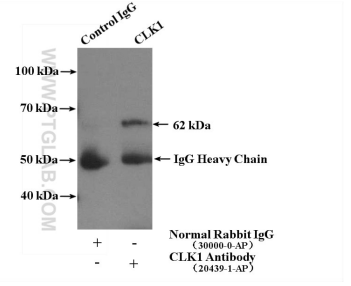
Selected Validation Data



Various lysates were subjected to SDS PAGE followed by western blot with 20439-1-AP (CLK1 antibody) at dilution of 1:400 incubated at room temperature for 1.5 hours. This data was developed using the same antibody clone with 20439-1-PBS in a different storage buffer formulation.



Various lysates were subjected to SDS PAGE followed by western blot with 20439-1-AP (CLK1 antibody) at dilution of 1:1000 incubated at room temperature for 1.5 hours. This data was developed using the same antibody clone with 20439-1-PBS in a different storage buffer formulation.



IP result of anti-CLK1 (IP:20439-1-AP, 4ug; Detection:20439-1-AP 1:300) with COLO 320 cells lysate 2000ug. This data was developed using the same antibody clone with 20439-1-PBS in a different storage buffer formulation.