

For Research Use Only

# YIPF2 Polyclonal antibody

Catalog Number: 20441-1-AP

Featured Product



## Basic Information

### Catalog Number:

20441-1-AP

### Size:

150ul, Concentration: 1000 ug/ml by Nanodrop and 553 ug/ml by Bradford method using BSA as the standard;

### Source:

Rabbit

### Isotype:

IgG

### Immunogen Catalog Number:

AG14238

### GenBank Accession Number:

BC000056

### GeneID (NCBI):

78992

### UNIPROT ID:

Q9BWQ6

### Full Name:

Yip1 domain family, member 2

### Calculated MW:

316 aa, 35 kDa

### Observed MW:

35-40 kDa

### Purification Method:

Antigen affinity purification

### Recommended Dilutions:

WB 1:1000-1:4000

IP 0.5-4.0 ug for 1.0-3.0 mg of total protein lysate

## Applications

### Tested Applications:

WB, IP, ELISA

### Species Specificity:

human

### Positive Controls:

WB : HepG2 cells,

IP : HepG2 cells,

## Background Information

YIPF2 is a member of YIP family whose name refers to the Ypt (yeast RAB GTPase)-interacting protein predicted to have five transmembrane segments with an N-terminal exposed to the cytoplasm and a short C-terminal exposed to the lumen of the secretory pathway. YIPF2 has been reported to mainly locate in the trans-Golgi network (TGN) co-localized with virous RAB proteins, suggesting that it is potentially involved in vesicle transport (PMID: 31189879). YIPF2 can serve as the GDF (GDI-displacement factor) of RAB5/RAB22A and intracellular binder of CD147 in HCC cells (PMID: 31189879).

## Storage

### Storage:

Store at -20°C. Stable for one year after shipment.

### Storage Buffer:

PBS with 0.02% sodium azide and 50% glycerol, pH7.3

Aliquoting is unnecessary for -20°C storage

\*\*\* 20ul sizes contain 0.1% BSA

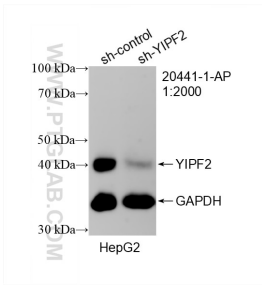
For technical support and original validation data for this product please contact:

T: 1 (888) 4PTGLAB (1-888-478-4522) (toll free in USA), or 1(312) 455-8498 (outside USA)

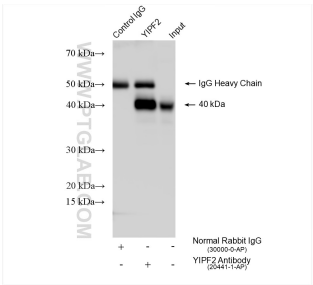
E: [proteintech@ptglab.com](mailto:proteintech@ptglab.com)  
W: [ptglab.com](http://ptglab.com)

This product is exclusively available under Proteintech Group brand and is not available to purchase from any other manufacturer.

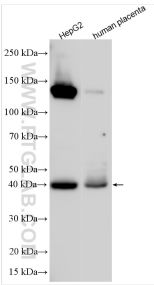
Selected Validation Data



WB result of YIPF2 antibody (20441-1-AP; 1:2000; incubated at room temperature for 1.5 hours) with sh-Control and sh-YIPF2 transfected HepG2 cells.



IP result of anti-YIPF2 (IP:20441-1-AP, 4ug; Detection:20441-1-AP 1:500) with HepG2 cells lysate 1470 ug.



Various lysates were subjected to SDS PAGE followed by western blot with 20441-1-AP (YIPF2 antibody) at dilution of 1:1000 incubated at room temperature for 1.5 hours.