

For Research Use Only

YIPF2 Polyclonal antibody, PBS Only

Catalog Number: 20441-1-PBS

Featured Product



Basic Information

Catalog Number:

20441-1-PBS

Size:

100ug, Concentration: 1 mg/ml by Nanodrop;

Source:

Rabbit

Isotype:

IgG

Immunogen Catalog Number:

AG14238

GenBank Accession Number:

BC000056

GeneID (NCBI):

78992

UNIPROT ID:

Q9BWQ6

Full Name:

Yip1 domain family, member 2

Calculated MW:

316 aa, 35 kDa

Observed MW:

35-40 kDa

Purification Method:

Antigen affinity purification

Applications

Tested Applications:

WB, IP, Indirect ELISA

Species Specificity:

human

Background Information

YIPF2 is a member of YIP family whose name refers to the Ypt (yeast RAB GTPase)-interacting protein predicted to have five transmembrane segments with an N-terminal exposed to the cytoplasm and a short C-terminal exposed to the lumen of the secretory pathway. YIPF2 has been reported to mainly locate in the trans-Golgi network (TGN) co-localized with virous RAB proteins, suggesting that it is potentially involved in vesicle transport (PMID: 31189879). YIPF2 can serve as the GDF (GDI-displacement factor) of RAB5/RAB22A and intracellular binder of CD147 in HCC cells (PMID: 311898799).

Storage

Storage:

Store at -80°C.

Storage Buffer:

PBS Only

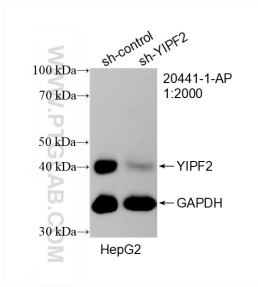
For technical support and original validation data for this product please contact:

T: 1 (888) 4PTGLAB (1-888-478-4522) (toll free in USA), or 1(312) 455-8498 (outside USA)

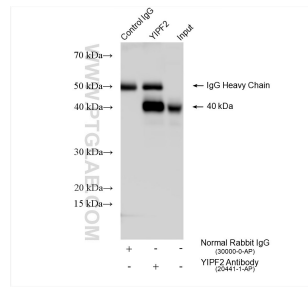
E: proteintech@ptglab.com
W: ptglab.com

This product is exclusively available under Proteintech Group brand and is not available to purchase from any other manufacturer.

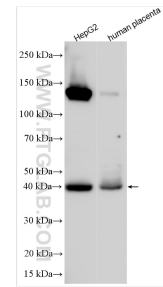
Selected Validation Data



WB result of YIPF2 antibody (20441-1-AP; 1:2000; incubated at room temperature for 1.5 hours) with sh-Control and sh-YIPF2 transfected HepG2 cells. This data was developed using the same antibody clone with 20441-1-PBS in a different storage buffer formulation.



IP result of anti-YIPF2 (IP:20441-1-AP, 4ug; Detection:20441-1-AP 1:500) with HepG2 cells lysate 1470 ug. This data was developed using the same antibody clone with 20441-1-PBS in a different storage buffer formulation.



Various lysates were subjected to SDS PAGE followed by western blot with 20441-1-AP (YIPF2 antibody) at dilution of 1:1000 incubated at room temperature for 1.5 hours. This data was developed using the same antibody clone with 20441-1-PBS in a different storage buffer formulation.