

For Research Use Only

EDG2 Polyclonal antibody

Catalog Number: 20442-1-AP **1 Publications**



Basic Information

Catalog Number: 20442-1-AP	GenBank Accession Number: BC030615	Purification Method: Antigen affinity purification
Size: 150ul , Concentration: 700 µg/ml by Nanodrop and 207 µg/ml by Bradford method using BSA as the standard;	GeneID (NCBI): 1902	Recommended Dilutions: WB 1:300-1:1000 IHC 1:50-1:500
Source: Rabbit	Full Name: lysophosphatidic acid receptor 1	
Isotype: IgG	Calculated MW: 364 aa, 41 kDa	
Immunogen Catalog Number: AG14253	Observed MW: 41-50 kDa	

Applications

Tested Applications: IHC, WB, ELISA	Positive Controls:
Cited Applications: WB	WB : Jurkat cells, A375 cells, HeLa cells, mouse brain tissue, multi-cells/tissue, A549 cells, A2780 cells, NIH3T3 cells
Species Specificity: human, mouse, rat	IHC : human brain tissue, mouse brain tissue
Cited Species: human	
Note-IHC: suggested antigen retrieval with TE buffer pH 9.0; (*) Alternatively, antigen retrieval may be performed with citrate buffer pH 6.0	

Background Information

Notable Publications

Author	Pubmed ID	Journal	Application
Junting Cai	28348461	Mediators Inflamm	WB

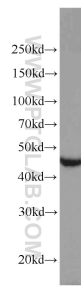
Storage

Storage:
Store at -20°C. Stable for one year after shipment.
Storage Buffer:
PBS with 0.02% sodium azide and 50% glycerol pH 7.3.
Aliquoting is unnecessary for -20°C storage

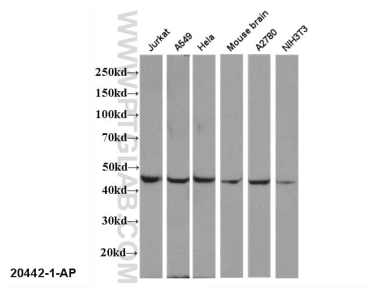
For technical support and original validation data for this product please contact:
T: 1 (888) 4PTGLAB (1-888-478-4522) (toll free in USA), or 1(312) 455-8498 (outside USA) E: proteintech@ptglab.com W: ptglab.com

This product is exclusively available under Proteintech Group brand and is not available to purchase from any other manufacturer.

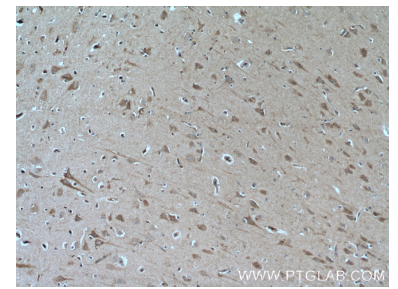
Selected Validation Data



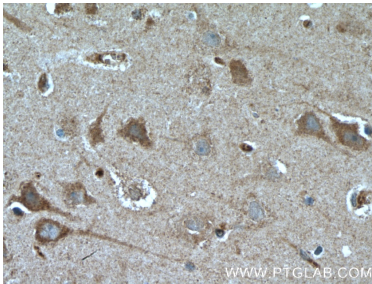
Jurkat cells were subjected to SDS PAGE followed by western blot with 20442-1-AP (EDG2 antibody) at dilution of 1:1000 incubated at room temperature for 1.5 hours.



Multi-cells/tissue were subjected to SDS PAGE followed by western blot with 20442-1-AP (EDG2 antibody) at dilution of 1:1000 incubated at room temperature for 1.5 hours.



Immunohistochemical analysis of paraffin-embedded human brain tissue slide using 20442-1-AP (LPAR1, EDG2 Antibody) at dilution of 1:100 (under 10x lens). Heat mediated antigen retrieval with Tris-EDTA buffer (pH 9.0).



Immunohistochemical analysis of paraffin-embedded human brain tissue slide using 20442-1-AP (LPAR1, EDG2 Antibody) at dilution of 1:100 (under 40x lens). Heat mediated antigen retrieval with Tris-EDTA buffer (pH 9.0).