

For Research Use Only

EDG2/LPA1 Polyclonal antibody, PBS Only

Catalog Number: 20442-1-PBS



Basic Information

Catalog Number: 20442-1-PBS	GenBank Accession Number: BC030615	Purification Method: Antigen affinity purification
Size: 100ug , Concentration: 1 mg/ml by Nanodrop;	GeneID (NCBI): 1902	
Source: Rabbit	UNIPROT ID: Q92633	
Isotype: IgG	Full Name: lysophosphatidic acid receptor 1	
Immunogen Catalog Number: AG14253	Calculated MW: 364 aa, 41 kDa	
	Observed MW: 41-50 kDa	

Applications

Tested Applications:
WB, IHC, FC (Intra), Indirect ELISA

Species Specificity:
human, mouse

Background Information

EDG2 (also known as LPA1) is a G-protein coupled receptor for lysophosphatidic acid (LPA), a potent motility inducing factor, which is a major component of serum (PMID: 19415462). EDG2 is widely expressed in normal tissue during growth and development. In the context of cancer, several studies have suggested that EDG2 expression in tumors is often similar to that shown in normal tissue (PMID: 17496233).

Storage

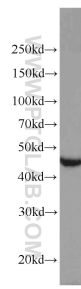
Storage:
Store at -80°C.

Storage Buffer:
PBS only, pH7.3

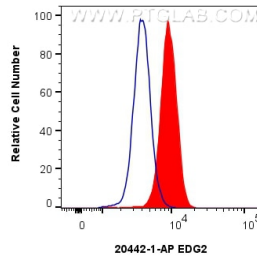
For technical support and original validation data for this product please contact:
T: 1 (888) 4PTGLAB (1-888-478-4522) (toll free in USA), or 1(312) 455-8498 (outside USA) E: proteintech@ptglab.com
W: ptglab.com

This product is exclusively available under Proteintech Group brand and is not available to purchase from any other manufacturer.

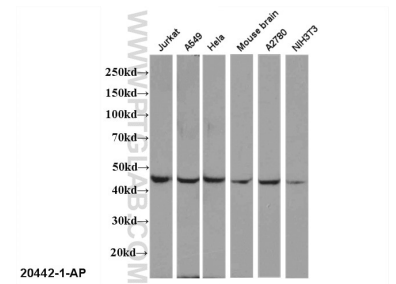
Selected Validation Data



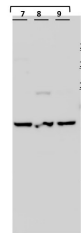
Jurkat cells were subjected to SDS PAGE followed by western blot with 20442-1-AP (EDG2 antibody) at dilution of 1:1000 incubated at room temperature for 1.5 hours. This data was developed using the same antibody clone with 20442-1-PBS in a different storage buffer formulation.



1×10^6 Jurkat cells were intracellularly stained with 0.25 μ g EDG2 Polyclonal antibody (20442-1-AP) and CoraLite® 488-Conjugated Goat Anti-Rabbit IgG(H+L) (SA00013-2)(red), or 0.25 μ g Rabbit IgG Isotype Control RecAb (98136-1-RR, Clone: 240953C9) (blue). Cells were fixed with 4% PFA and permeabilized with Flow Cytometry Perm Buffer. This data was developed using the same antibody clone with 20442-1-PBS in a different storage buffer formulation.

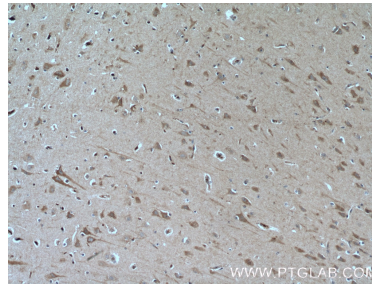


Multi-cells/tissue were subjected to SDS PAGE followed by western blot with 20442-1-AP (EDG2 antibody) at dilution of 1:1000 incubated at room temperature for 1.5 hours. This data was developed using the same antibody clone with 20442-1-PBS in a different storage buffer formulation.

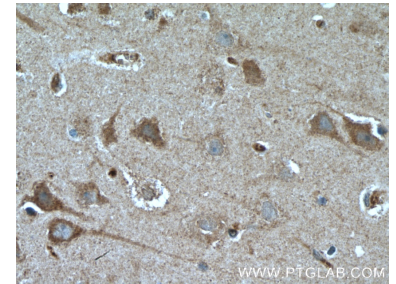


7	A375	20442-1-AP	26571-2	3000	00111988
8	HeLa	20442-1-AP	26571-2	3000	00111988
9	Jurkat	20442-1-AP	26571-2	3000	00111988

A375 cells were subjected to SDS PAGE followed by western blot with 20442-1-AP (EDG2/LPA1 antibody) at dilution of 1:3000 incubated at room temperature for 1.5 hours. This data was developed using the same antibody clone with 20442-1-PBS in a different storage buffer formulation.



Immunohistochemical analysis of paraffin-embedded human brain tissue slide using 20442-1-AP (LPAR1, EDG2 Antibody) at dilution of 1:100 (under 10x lens). Heat mediated antigen retrieval with Tris-EDTA buffer (pH 9.0). This data was developed using the same antibody clone with 20442-1-PBS in a different storage buffer formulation.



Immunohistochemical analysis of paraffin-embedded human brain tissue slide using 20442-1-AP (LPAR1, EDG2 Antibody) at dilution of 1:100 (under 40x lens). Heat mediated antigen retrieval with Tris-EDTA buffer (pH 9.0). This data was developed using the same antibody clone with 20442-1-PBS in a different storage buffer formulation.