

For Research Use Only

# C10orf58 Polyclonal antibody

Catalog Number: 20446-1-AP



## Basic Information

<b>Catalog Number:</b> 20446-1-AP	<b>GenBank Accession Number:</b> BC005871	<b>Purification Method:</b> Antigen affinity purification
<b>Size:</b> 150ul , Concentration: 450 µg/ml by Nanodrop and 260 µg/ml by Bradford method using BSA as the standard;	<b>GeneID (NCBI):</b> 84293	<b>Recommended Dilutions:</b> WB 1:200-1:1000 IHC 1:50-1:500 IF 1:20-1:200
<b>Source:</b> Rabbit	<b>Full Name:</b> chromosome 10 open reading frame 58	
<b>Isotype:</b> IgG	<b>Calculated MW:</b> 229 aa, 26 kDa	
<b>Immunogen Catalog Number:</b> AG14272	<b>Observed MW:</b> 24-30 kDa	

## Applications

<b>Tested Applications:</b> IF, IHC, WB, ELISA	<b>Positive Controls:</b> WB : ROS1728 cells, IHC : human skin tissue, IF : ROS1728 cells,
<b>Species Specificity:</b> human, rat	
<b>Note-IHC: suggested antigen retrieval with TE buffer pH 9.0; (*) Alternatively, antigen retrieval may be performed with citrate buffer pH 6.0</b>	

## Background Information

C10orf58, also name as FAM213A and PAMM, is involved in redox regulation of the cell. It acts as an antioxidant. C10orf58 inhibits TNFSF11-induced NFκB1 and JUN activation and osteoclast differentiation. It may affect bone resorption and help to maintain bone mass. The MW of C10orf58 is 24-30 kDa.

## Storage

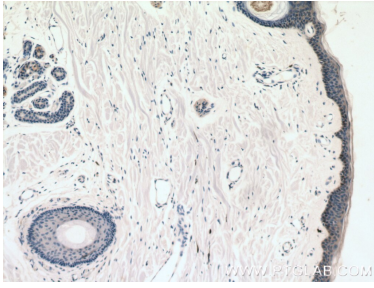
**Storage:**  
Store at -20°C. Stable for one year after shipment.  
**Storage Buffer:**  
PBS with 0.02% sodium azide and 50% glycerol pH 7.3.  
Aliquoting is unnecessary for -20°C storage

\*\*\* 20ul sizes contain 0.1% BSA

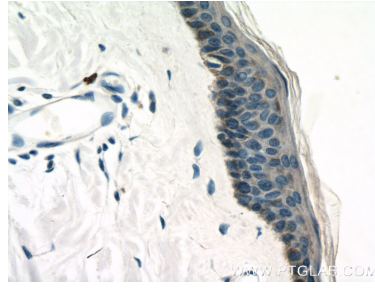
For technical support and original validation data for this product please contact:  
T: 1 (888) 4PTGLAB (1-888-478-4522) (toll free in USA), or 1(312) 455-8498 (outside USA)  
E: proteintech@ptglab.com  
W: ptglab.com

This product is exclusively available under Proteintech Group brand and is not available to purchase from any other manufacturer.

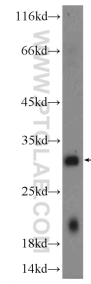
## Selected Validation Data



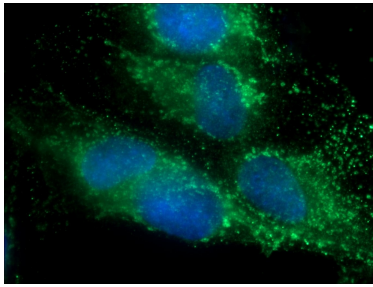
Immunohistochemical analysis of paraffin-embedded human skin tissue slide using 20446-1-AP (C10orf58 antibody) at dilution of 1:200 (under 10x lens).



Immunohistochemical analysis of paraffin-embedded human skin tissue slide using 20446-1-AP (C10orf58 antibody) at dilution of 1:200 (under 40x lens).



ROS1728 cells were subjected to SDS PAGE followed by western blot with 20446-1-AP (C10orf58 Antibody) at dilution of 1:300 incubated at room temperature for 1.5 hours.



Immunofluorescent analysis of ROS1728 cells using 20446-1-AP (C10orf58 antibody) at dilution of 1:50 and Alexa Fluor 488-conjugated AffiniPure Goat Anti-Rabbit IgG(H+L).