

For Research Use Only

C10orf58 Polyclonal antibody, PBS Only

Catalog Number: 20446-1-PBS



Basic Information

Catalog Number: 20446-1-PBS	GenBank Accession Number: BC005871	Purification Method: Antigen affinity purification
Size: 100ug , Concentration: 1 mg/ml by Nanodrop;	GeneID (NCBI): 84293	
Source: Rabbit	UNIPROT ID: Q9BRX8	
Isotype: IgG	Full Name: chromosome 10 open reading frame 58	
Immunogen Catalog Number: AG14272	Calculated MW: 229 aa, 26 kDa	
	Observed MW: 24-30 kDa	

Applications

Tested Applications:
WB, IHC, IF/ICC, Indirect ELISA

Species Specificity:
human, rat

Background Information

C10orf58, also name as FAM213A and PAMM, is involved in redox regulation of the cell. It acts as an antioxidant. C10orf58 inhibits TNFSF11-induced NFKB1 and JUN activation and osteoclast differentiation. It may affect bone resorption and help to maintain bone mass. The MW of C10orf58 is 24-30 kDa.

Storage

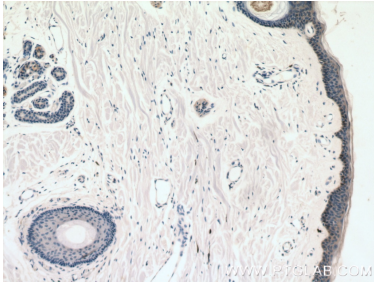
Storage:
Store at -80°C.

Storage Buffer:
PBS only, pH7.3

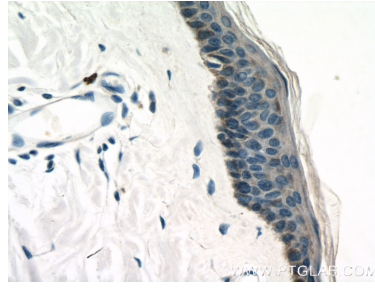
For technical support and original validation data for this product please contact:
T: 1 (888) 4PTGLAB (1-888-478-4522) (toll free in USA), or 1(312) 455-8498 (outside USA) E: proteintech@ptglab.com
W: ptglab.com

This product is exclusively available under Proteintech Group brand and is not available to purchase from any other manufacturer.

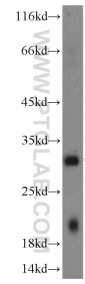
Selected Validation Data



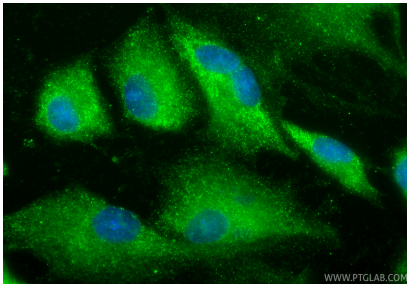
Immunohistochemical analysis of paraffin-embedded human skin tissue slide using 20446-1-AP (C10orf58 antibody) at dilution of 1:200 (under 10x lens). This data was developed using the same antibody clone with 20446-1-PBS in a different storage buffer formulation.



Immunohistochemical analysis of paraffin-embedded human skin tissue slide using 20446-1-AP (C10orf58 antibody) at dilution of 1:200 (under 40x lens). This data was developed using the same antibody clone with 20446-1-PBS in a different storage buffer formulation.



ROS1728 cells were subjected to SDS PAGE followed by western blot with 20446-1-AP (C10orf58 Antibody) at dilution of 1:300 incubated at room temperature for 1.5 hours. This data was developed using the same antibody clone with 20446-1-PBS in a different storage buffer formulation.



Immunofluorescent analysis of (-20°C Ethanol) fixed ROS1728 cells using C10orf58 antibody (20446-1-AP) at dilution of 1:200 and CoraLite®488-Conjugated Goat Anti-Rabbit IgG(H+L) (SA00013-2). This data was developed using the same antibody clone with 20446-1-PBS in a different storage buffer formulation.