

For Research Use Only

KRT34 Polyclonal antibody

Catalog Number: 20449-1-AP



Basic Information

Catalog Number: 20449-1-AP	GenBank Accession Number: BC041070	Purification Method: Antigen affinity purification
Size: 150ul , Concentration: 1000 ug/ml by Nanodrop and 540 ug/ml by Bradford method using BSA as the standard;	GeneID (NCBI): 3885	Recommended Dilutions: WB 1:500-1:1000
Source: Rabbit	UNIPROT ID: O76011	IHC 1:50-1:500
Isotype: IgG	Full Name: keratin 34	IF/ICC 1:50-1:500
Immunogen Catalog Number: AG14295	Calculated MW: 436 aa, 49 kDa	
	Observed MW: 49 kDa	

Applications

Tested Applications: WB, IHC, IF/ICC, ELISA	Positive Controls:
Species Specificity: human, mouse	WB : HeLa cells, A375 cells, HepG2 cells, L02 cells, mouse skin tissue
Note-IHC: suggested antigen retrieval with TE buffer pH 9.0; (*) Alternatively, antigen retrieval may be performed with citrate buffer pH 6.0	IHC : human skin cancer tissue, human lung squamous cell carcinoma tissue
	IF/ICC : HepG2 cells,

Background Information

Keratins are a large family of proteins that form the intermediate filament cytoskeleton of epithelial cells. Keratin expression is highly regulated, tissue specific, and varies according to cell-state. Type I keratins consist of acidic, low molecular weight proteins with MW ranging from 40 kDa (KRT19) to 64 kDa (KRT9). Type 2 keratins consist of basic or neutral, high molecular weight proteins with MW from 52 kDa (KRT8) to 67 kDa (KRT18). KRT 34 is a type I keratin.

Storage

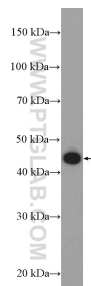
Storage:
Store at -20°C. Stable for one year after shipment.
Storage Buffer:
PBS with 0.02% sodium azide and 50% glycerol
Aliquoting is unnecessary for -20°C storage

*** 20ul sizes contain 0.1% BSA

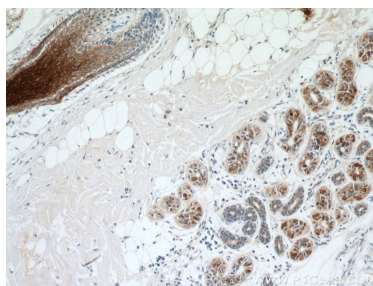
For technical support and original validation data for this product please contact:
T: 1 (888) 4PTGLAB (1-888-478-4522) (toll free in USA), or 1(312) 455-8498 (outside USA)
E: proteintech@ptglab.com
W: ptglab.com

This product is exclusively available under Proteintech Group brand and is not available to purchase from any other manufacturer.

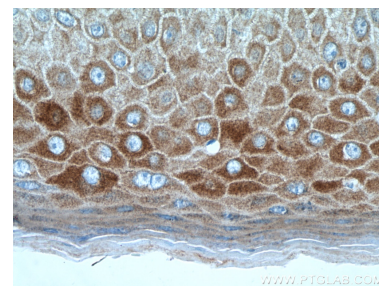
Selected Validation Data



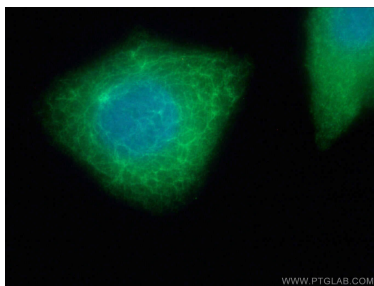
HeLa cells were subjected to SDS PAGE followed by western blot with 20449-1-AP (KRT34 Antibody) at dilution of 1:600 incubated at room temperature for 1.5 hours.



Immunohistochemical analysis of paraffin-embedded human skin cancer tissue slide using 20449-1-AP (KRT34 antibody) at dilution of 1:200 (under 10x lens).



Immunohistochemical analysis of paraffin-embedded human skin cancer tissue slide using 20449-1-AP (KRT34 antibody) at dilution of 1:200 (under 40x lens).



Immunofluorescent analysis of (4% PFA) fixed HepG2 cells using 20449-1-AP (KRT34 antibody) at dilution of 1:50 and Alexa Fluor 488-Conjugated AffiniPure Goat Anti-Rabbit IgG(H+L).