

For Research Use Only

SMN Polyclonal antibody

Catalog Number: 20451-1-AP

Featured Product



Basic Information

Catalog Number:

20451-1-AP

Size:

150ul, Concentration: 350 ug/ml by Nanodrop and 307 ug/ml by Bradford method using BSA as the standard;

Source:

Rabbit

Isotype:

IgG

Immunogen Catalog Number:

AG14333

GenBank Accession Number:

BC000908

GeneID (NCBI):

6607

UNIPROT ID:

Q16637

Full Name:

survival of motor neuron 2, centromeric

Calculated MW:

282 aa, 30 kDa

Observed MW:

38 kDa

Purification Method:

Antigen affinity purification

Recommended Dilutions:

WB 1:500-1:3000

IP 0.5-4.0 ug for 1.0-3.0 mg of total protein lysate

IHC 1:50-1:200

IF/ICC 1:400-1:1600

Applications

Tested Applications:

WB, IHC, IF/ICC, IP, ELISA

Species Specificity:

human, mouse

Note-IHC: suggested antigen retrieval with TE buffer pH 9.0; (*) Alternatively, antigen retrieval may be performed with citrate buffer pH 6.0

Positive Controls:

WB : HEK-293 cells, Jurkat cells, HepG2 cells, HeLa cells, K-562 cells

IP : HEK-293 cells,

IHC : human kidney tissue, human heart tissue

IF/ICC : HepG2 cells,

Background Information

Spinal muscular atrophy (SMA) is an autosomal recessive neurodegenerative disease characterized by loss of anterior horn cells in the spinal cord and concomitant symmetrical muscle weakness and atrophy (PMID: 16364894). SMA is caused by deletion or mutations of the survival motor neuron (SMN1) gene. SMA patients lack a functional SMN1 gene, but they possess an intact SMN2 gene, which though nearly identical to SMN1, is only partially functional (PMID: 17355180). A large majority of SMN2 transcripts lack exon 7, resulting in production of a truncated, less stable SMN protein (PMID: 10369862). The level of SMN protein correlates with phenotypic severity of SMA.

Storage

Storage:

Store at -20°C. Stable for one year after shipment.

Storage Buffer:

PBS with 0.02% sodium azide and 50% glycerol pH 7.3.

Aliquoting is unnecessary for -20°C storage

*** 20ul sizes contain 0.1% BSA

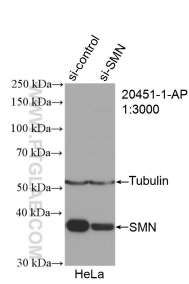
For technical support and original validation data for this product please contact:

T: 1 (888) 4PTGLAB (1-888-478-4522) (toll free in USA), or 1(312) 455-8498 (outside USA)

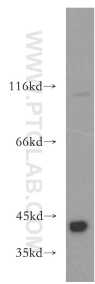
E: proteintech@ptglab.com
W: ptglab.com

This product is exclusively available under Proteintech Group brand and is not available to purchase from any other manufacturer.

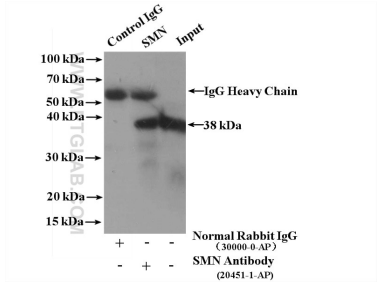
Selected Validation Data



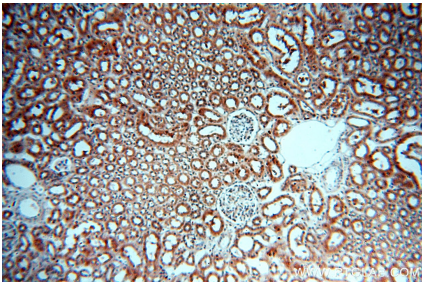
WB result of SMN antibody (20451-1-AP; 1:3000; incubated at room temperature for 1.5 hours) with sh-Control and sh-SMN transfected HeLa cells.



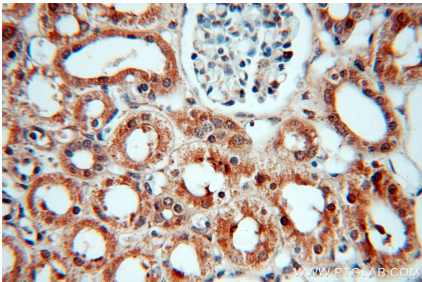
HEK-293 cells were subjected to SDS PAGE followed by western blot with 20451-1-AP (SMN antibody) at dilution of 1:800 incubated at room temperature for 1.5 hours.



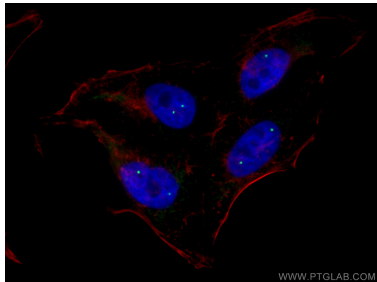
IP result of anti-SMN (IP:20451-1-AP, 4ug; Detection:20451-1-AP 1:300) with HEK-293 cells lysate 2000 ug.



Immunohistochemical analysis of paraffin-embedded human kidney using 20451-1-AP (SMN antibody) at dilution of 1:100 (under 10x lens).



Immunohistochemical analysis of paraffin-embedded human kidney using 20451-1-AP (SMN antibody) at dilution of 1:100 (under 40x lens).



Immunofluorescent analysis of (4% PFA) fixed HepG2 cells using SMN antibody (20451-1-AP) at dilution of 1:800 and CoraLite®488-Conjugated AffiniPure Goat Anti-Rabbit IgG(H+L), CL594-Phalloidin (red).