

For Research Use Only

ALDH6A1 Polyclonal antibody

Catalog Number: 20452-1-AP

3 Publications



Basic Information

Catalog Number:

20452-1-AP

Size:

150ul, Concentration: 400 ug/ml by Nanodrop;

Source:

Rabbit

Isotype:

IgG

Immunogen Catalog Number:

AG13879

GenBank Accession Number:

BC004909

GeneID (NCBI):

4329

UNIPROT ID:

Q02252

Full Name:

aldehyde dehydrogenase 6 family, member A1

Calculated MW:

535 aa, 58 kDa

Observed MW:

58 kDa

Purification Method:

Antigen affinity purification

Recommended Dilutions:

WB 1:3000-1:12000

IHC 1:150-1:600

Applications

Tested Applications:

WB, IHC, ELISA

Cited Applications:

WB

Species Specificity:

human, mouse, rat

Cited Species:

human

Note-IHC: suggested antigen retrieval with TE buffer pH 9.0; (*) Alternatively, antigen retrieval may be performed with citrate buffer pH 6.0

Positive Controls:

WB: rat liver tissue, mouse heart tissue, mouse kidney tissue, HEK-293 cells, rat kidney tissue, mouse liver tissue

IHC: human liver tissue, human kidney tissue, human hepatocirrhosis tissue

Notable Publications

Author	Pubmed ID	Journal	Application
Sven Wach	31878355	Cancers (Basel)	WB
Matthias Höllerhage	35481270	Front Neurol	WB
Jianan Zhao	37649604	Theranostics	WB

Storage

Storage:

Store at -20°C. Stable for one year after shipment.

Storage Buffer:

PBS with 0.02% sodium azide and 50% glycerol pH 7.3.

Aliquoting is unnecessary for -20°C storage

*** 20ul sizes contain 0.1% BSA

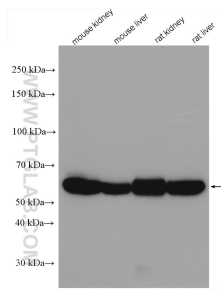
For technical support and original validation data for this product please contact:

T: 1 (888) 4PTGLAB (1-888-478-4522) (toll free in USA), or 1(312) 455-8498 (outside USA)

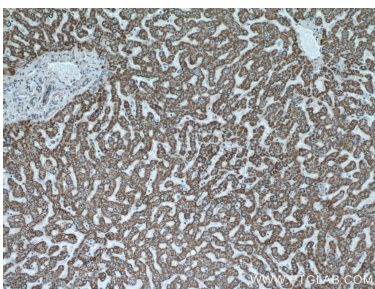
E: proteintech@ptglab.com
W: ptglab.com

This product is exclusively available under Proteintech Group brand and is not available to purchase from any other manufacturer.

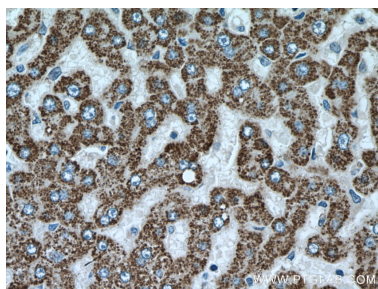
Selected Validation Data



Various lysates were subjected to SDS PAGE followed by western blot with 20452-1-AP (ALDH6A1 antibody) at dilution of 1:6000 incubated at room temperature for 1.5 hours.



Immunohistochemical analysis of paraffin-embedded human liver tissue slide using 20452-1-AP (ALDH6A1 antibody) at dilution of 1:300 (under 10x lens).



Immunohistochemical analysis of paraffin-embedded human liver tissue slide using 20452-1-AP (ALDH6A1 antibody) at dilution of 1:300 (under 40x lens).