

For Research Use Only

LRRC41 Polyclonal antibody

Catalog Number: 20457-1-AP



Basic Information

Catalog Number:

20457-1-AP

Size:

150ul , Concentration: 400 ug/ml by Nanodrop;

Source:

Rabbit

Isotype:

IgG

Immunogen Catalog Number:

AG14266

GenBank Accession Number:

BC004953

GeneID (NCBI):

10489

UNIPROT ID:

Q15345

Full Name:

leucine rich repeat containing 41

Calculated MW:

812 aa, 87 kDa

Observed MW:

80-90 kDa

Purification Method:

Antigen affinity purification

Recommended Dilutions:

WB 1:500-1:2000

IP 0.5-4.0 ug for 1.0-3.0 mg of total protein lysate

IHC 1:20-1:200

Applications

Tested Applications:

WB, IHC, IP, ELISA

Species Specificity:

human, mouse, rat

Note-IHC: suggested antigen retrieval with TE buffer pH 9.0; (*) Alternatively, antigen retrieval may be performed with citrate buffer pH 6.0

Positive Controls:

WB : H9C2 cells,

IP : K-562 cells,

IHC : human testis tissue, human liver tissue

Storage

Storage:

Store at -20°C. Stable for one year after shipment.

Storage Buffer:

PBS with 0.02% sodium azide and 50% glycerol pH 7.3.

Aliquoting is unnecessary for -20°C storage

*** 20ul sizes contain 0.1% BSA

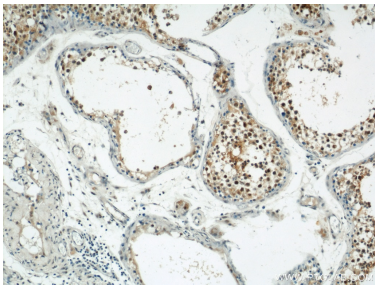
For technical support and original validation data for this product please contact:

T: 1 (888) 4PTGLAB (1-888-478-4522) (toll free in USA), or 1(312) 455-8498 (outside USA)

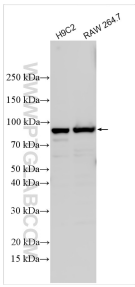
E: proteintech@ptglab.com
W: ptglab.com

This product is exclusively available under Proteintech Group brand and is not available to purchase from any other manufacturer.

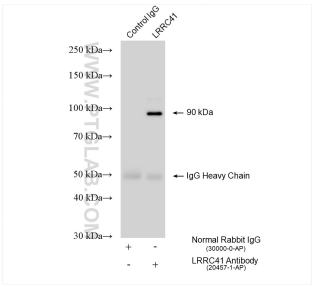
Selected Validation Data



Immunohistochemical analysis of paraffin-embedded human testis using 20457-1-AP (LRRC41 antibody) at dilution of 1:50 (under 10x lens).



Various lysates were subjected to SDS PAGE followed by western blot with 20457-1-AP (LRRC41 antibody) at dilution of 1:1000 incubated at room temperature for 1.5 hours.



IP result of anti-LRRC41 (IP:20457-1-AP, 4ug; Detection:20457-1-AP 1:300) with K-562 cells lysate 1820 ug.