

For Research Use Only

# EPS8L2 Polyclonal antibody

Catalog Number: 20461-1-AP

Featured Product

2 Publications



## Basic Information

### Catalog Number:

20461-1-AP

### Size:

150ul, Concentration: 450 ug/ml by Nanodrop and 287 ug/ml by Bradford method using BSA as the standard;

### Source:

Rabbit

### Isotype:

IgG

### Immunogen Catalog Number:

AG14296

### GenBank Accession Number:

BC002474

### GeneID (NCBI):

64787

### UNIPROT ID:

Q9H6S3

### Full Name:

EPS8-like 2

### Calculated MW:

715 aa, 81 kDa

### Observed MW:

81-85 kDa

### Purification Method:

Antigen affinity purification

### Recommended Dilutions:

WB 1:1000-1:6000

IP 0.5-4.0 ug for 1.0-3.0 mg of total protein lysate

IHC 1:50-1:500

IF/ICC 1:10-1:100

## Applications

### Tested Applications:

WB, IHC, IF/ICC, IP, ELISA

### Cited Applications:

WB, IF, IHC

### Species Specificity:

human, mouse

### Cited Species:

mouse

**Note-IHC: suggested antigen retrieval with TE buffer pH 9.0; (\*) Alternatively, antigen retrieval may be performed with citrate buffer pH 6.0**

### Positive Controls:

WB : A431 cells, HepG2 cells, HeLa cells, mouse skin tissue

IP : HeLa cells,

IHC : human lung cancer tissue,

IF/ICC : HeLa cells,

## Background Information

EPS8L2 (epidermal growth factor receptor pathway substrate 8 L2), a member of the Eps8-like protein family, is a newly identified hair bundle protein that is localized at the tips of stereocilia of both cochlear and vestibular hair cells.

## Notable Publications

| Author         | Pubmed ID | Journal    | Application |
|----------------|-----------|------------|-------------|
| Xiaosen Ouyang | 32350405  | Lab Invest | IHC         |
| Min Yu         | 37925638  | Cell Rep   | IF, WB      |

## Storage

### Storage:

Store at -20°C. Stable for one year after shipment.

### Storage Buffer:

PBS with 0.02% sodium azide and 50% glycerol pH 7.3.

Aliquoting is unnecessary for -20°C storage

\*\*\* 20ul sizes contain 0.1% BSA

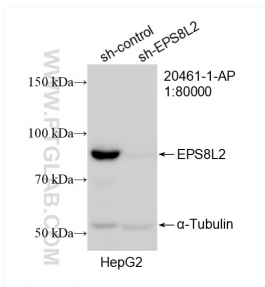
For technical support and original validation data for this product please contact:

T: 1 (888) 4PTGLAB (1-888-478-4522) (toll free in USA), or 1(312) 455-8498 (outside USA)

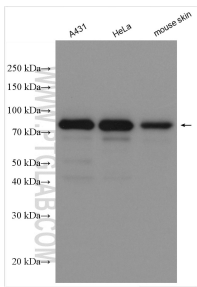
E: [proteintech@ptglab.com](mailto:proteintech@ptglab.com)  
W: [ptglab.com](http://ptglab.com)

This product is exclusively available under Proteintech Group brand and is not available to purchase from any other manufacturer.

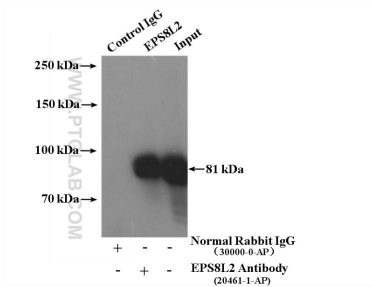
Selected Validation Data



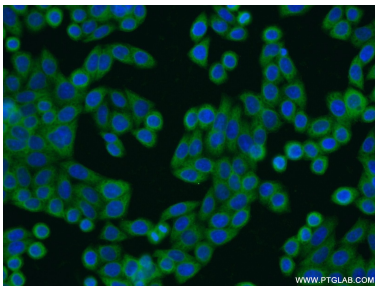
WB result of EPS8L2 antibody (20461-1-AP; 1:80000; incubated at room temperature for 1.5 hours) with sh-Control and sh-EPS8L2 transfected HepG2 cells.



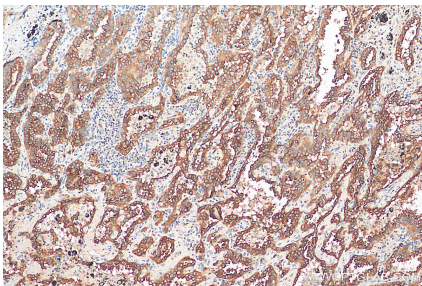
Various lysates were subjected to SDS PAGE followed by western blot with 20461-1-AP (EPS8L2 antibody) at dilution of 1:3000 incubated at room temperature for 1.5 hours.



IP result of anti-EPS8L2 (IP:20461-1-AP, 4ug; Detection:20461-1-AP 1:1000) with HeLa cells lysate 3200ug.



Immunofluorescent analysis of HeLa cells using 20461-1-AP (EPS8L2 antibody) at dilution of 1:25 and Alexa Fluor 488-conjugated Goat Anti-Rabbit IgG(H+L).



Immunohistochemical analysis of paraffin-embedded human lung cancer tissue slide using 20461-1-AP (EPS8L2 antibody) at dilution of 1:200 (under 10x lens). Heat mediated antigen retrieval with Tris-EDTA buffer (pH 9.0).