

For Research Use Only

CCDC51 Polyclonal antibody

Catalog Number: 20465-1-AP

Featured Product

2 Publications



Basic Information

Catalog Number:

20465-1-AP

Size:

150ul, Concentration: 300 ug/ml by Nanodrop and 233 ug/ml by Bradford method using BSA as the standard;

Source:

Rabbit

Isotype:

IgG

Immunogen Catalog Number:

AG14301

GenBank Accession Number:

BC004341

GeneID (NCBI):

79714

UNIPROT ID:

Q96ER9

Full Name:

coiled-coil domain containing 51

Calculated MW:

411 aa, 46 kDa

Observed MW:

46 kDa

Purification Method:

Antigen affinity purification

Recommended Dilutions:

WB 1:2000-1:10000

IHC 1:50-1:500

IF/ICC 1:50-1:500

Applications

Tested Applications:

WB, IHC, IF/ICC, ELISA

Cited Applications:

WB, IF

Species Specificity:

human, mouse, rat

Cited Species:

human

Note-IHC: suggested antigen retrieval with TE buffer pH 9.0; (*) Alternatively, antigen retrieval may be performed with citrate buffer pH 6.0

Positive Controls:

WB : HeLa cells, HepG2 cells, Jurkat cells, K-562 cells

IHC : human ovary tumor tissue,

IF/ICC : HeLa cells,

Notable Publications

Author	Pubmed ID	Journal	Application
Alia R Edington	39718510	J Cell Biol	WB,IF
Alia R Edington	38562768	bioRxiv	IF, WB

Storage

Storage:

Store at -20°C. Stable for one year after shipment.

Storage Buffer:

PBS with 0.02% sodium azide and 50% glycerol pH 7.3.

Aliquoting is unnecessary for -20°C storage

*** 20ul sizes contain 0.1% BSA

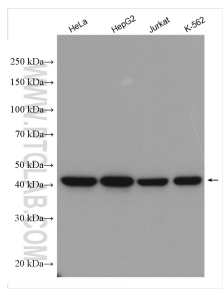
For technical support and original validation data for this product please contact:

T: 1 (888) 4PTGLAB (1-888-478-4522) (toll free in USA), or 1(312) 455-8498 (outside USA)

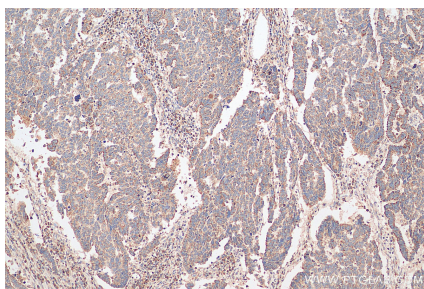
E: proteintech@ptglab.com
W: ptglab.com

This product is exclusively available under Proteintech Group brand and is not available to purchase from any other manufacturer.

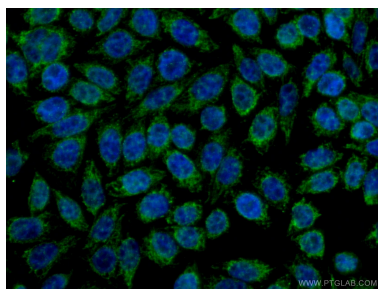
Selected Validation Data



HeLa cells were subjected to SDS PAGE followed by western blot with 20465-1-AP (CCDC51 antibody) at dilution of 1:5000 incubated at room temperature for 1.5 hours.



Immunohistochemical analysis of paraffin-embedded human ovary tumor tissue slide using 20465-1-AP (CCDC51 antibody) at dilution of 1:200 (under 10x lens). Heat mediated antigen retrieval with Tris-EDTA buffer (pH 9.0).



Immunofluorescent analysis of (4% PFA) fixed HeLa cells using 20465-1-AP (CCDC51 antibody) at dilution of 1:100 and CoraLite488-Conjugated Goat Anti-Rabbit IgG(H+L).