

For Research Use Only

# INF2 Polyclonal antibody

Catalog Number: 20466-1-AP

Featured Product

28 Publications



## Basic Information

### Catalog Number:

20466-1-AP

### Size:

150ul, Concentration: 600 µg/ml by Nanodrop and 347 µg/ml by Bradford method using BSA as the standard;

### Source:

Rabbit

### Isotype:

IgG

### Immunogen Catalog Number:

AG14302

### GenBank Accession Number:

BC008756

### GeneID (NCBI):

64423

### UNIPROT ID:

Q27J81

### Full Name:

inverted formin, FH2 and WH2 domain containing

### Calculated MW:

1249 aa, 136 kDa

### Observed MW:

180-200 kDa

### Purification Method:

Antigen affinity purification

### Recommended Dilutions:

WB 1:500-1:3000

IP 0.5-4.0 ug for 1.0-3.0 mg of total

protein lysate

IHC 1:20-1:200

IF 1:20-1:200

## Applications

### Tested Applications:

WB, IP, IF, IHC, ELISA

### Cited Applications:

WB, IF, IHC, CoIP

### Species Specificity:

human, mouse

### Cited Species:

human, mouse, zebrafish

### Positive Controls:

WB : HepG2 cells, NIH/3T3 cells, A431 cells, K-562 cells

IP : NIH/3T3 cells,

IHC : human kidney tissue,

IF : NIH/3T3 cells,

**Note-IHC: suggested antigen retrieval with TE buffer pH 9.0; (\*) Alternatively, antigen retrieval may be performed with citrate buffer pH 6.0**

## Background Information

INF2 is a member of the formin family of actin-regulating proteins. INF2 is peripherally bound to the cytoplasmic face of the endoplasmic reticulum (ER). Mutations in the formin gene INF2 cause focal segmental glomerulosclerosis. The predicted MW of INF2 is around 136 kDa, while higher molecular mass from 140-200 kDa has been reported in literature (26383224,20493814,19366733).

## Notable Publications

| Author           | Pubmed ID | Journal                   | Application |
|------------------|-----------|---------------------------|-------------|
| Zhanwei Zhang    | 30267803  | Int J Biochem Cell Biol   | WB          |
| Pantipa Tonsawan | 31553647  | Am J Physiol Cell Physiol | WB          |
| Hiroshi Tamura   | 26383224  | Nephrology (Carlton)      | WB, IF      |

## Storage

### Storage:

Store at -20°C. Stable for one year after shipment.

### Storage Buffer:

PBS with 0.02% sodium azide and 50% glycerol pH 7.3.

Aliquoting is unnecessary for -20°C storage

\*\*\* 20ul sizes contain 0.1%BSA

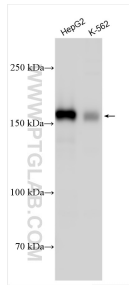
For technical support and original validation data for this product please contact:

T: 1 (888) 4PTGLAB (1-888-478-4522) (toll free in USA), or 1(312) 455-8498 (outside USA)

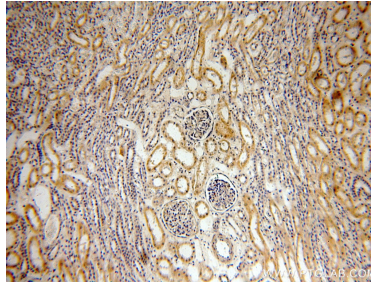
E: proteintech@ptglab.com  
W: ptglab.com

This product is exclusively available under Proteintech Group brand and is not available to purchase from any other manufacturer.

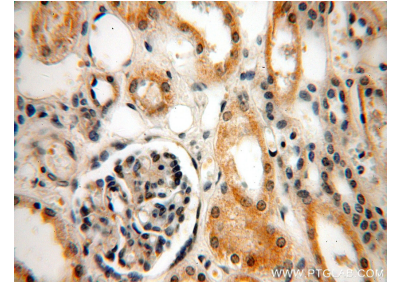
## Selected Validation Data



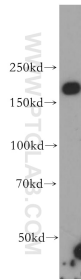
Various lysates were subjected to SDS PAGE followed by western blot with 20466-1-AP (INF2 antibody) at dilution of 1:1500 incubated at room temperature for 1.5 hours.



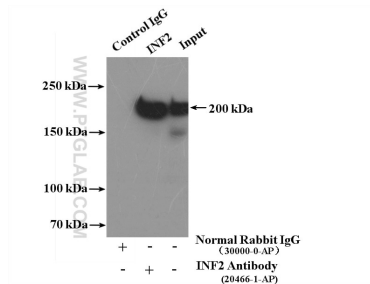
Immunohistochemical analysis of paraffin-embedded human kidney using 20466-1-AP (INF2 antibody) at dilution of 1:100 (under 10x lens).



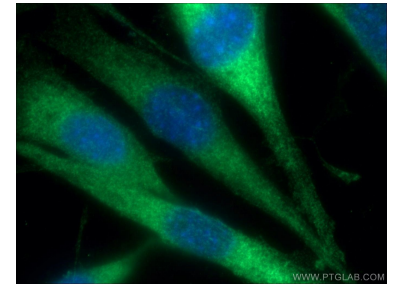
Immunohistochemical analysis of paraffin-embedded human kidney using 20466-1-AP (INF2 antibody) at dilution of 1:100 (under 40x lens).



A431 cells were subjected to SDS PAGE followed by western blot with 20466-1-AP (INF2 antibody) at dilution of 1:500 incubated at room temperature for 1.5 hours.



IP result of anti-INF2 (IP:20466-1-AP, 4ug; Detection:20466-1-AP 1:500) with NIH/3T3 cells lysate 4000ug.



Immunofluorescent analysis of (-20°C Ethanol) fixed NIH/3T3 cells using 20466-1-AP (INF2 antibody) at dilution of 1:50 and Alexa Fluor 488-conjugated AffiniPure Goat Anti-Rabbit IgG(H+L).