

For Research Use Only

SLC37A2 Polyclonal antibody

Catalog Number: 20469-1-AP



Basic Information

Catalog Number: 20469-1-AP	GenBank Accession Number: BC051314	Purification Method: Antigen affinity purification
Size: 150ul , Concentration: 200 µg/ml by Nanodrop and 133 µg/ml by Bradford method using BSA as the standard;	GeneID (NCBI): 219855	Recommended Dilutions: WB 1:300-1:600
Source: Rabbit	Full Name: solute carrier family 37 (glycerol-3-phosphate transporter), member 2	
Isotype: IgG	Calculated MW: 505 aa, 55 kDa	
Immunogen Catalog Number: AG14306	Observed MW: 50-75 kDa	

Applications

Tested Applications: WB, ELISA	Positive Controls: WB : mouse thymus tissue, HeLa cells, RAW 264.7 cells, mouse spleen tissue, rat thymus tissue
Species Specificity: human, mouse, rat	

Background Information

The solute carrier family 37 (SLC37) consists of four sugar-phosphate exchangers, A1, A2, A3, and A4, which are anchored in the endoplasmic reticulum (ER) membrane (PMID:23506893). Solute Carrier Family 37 Member 2 (SLC37A2), also known as SPX2, was first identified in a work, conducted on mice and aimed to detect cAMP inducible genes playing a role in promoting cholesterol efflux from the macrophage cell line RAW264 via apoE and apoA1 (PMID:11004510). Interestingly, of the four SLC37A members, SLC37A2 displays the highest level of transcript abundance in neutrophils and macrophages, indicating that SLC37A2 may play an essential role in regulating innate immune function (PMID:32428862).

Storage

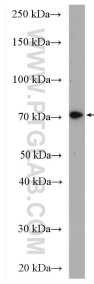
Storage:
Store at -20°C. Stable for one year after shipment.
Storage Buffer:
PBS with 0.02% sodium azide and 50% glycerol pH 7.3.
Aliquoting is unnecessary for -20°C storage

*** 20ul sizes contain 0.1% BSA

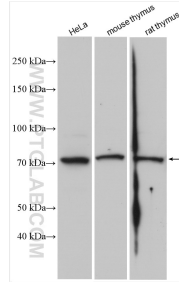
For technical support and original validation data for this product please contact:
T: 1 (888) 4PTGLAB (1-888-478-4522) (toll free in USA), or 1(312) 455-8498 (outside USA)
E: proteintech@ptglab.com
W: ptglab.com

This product is exclusively available under Proteintech Group brand and is not available to purchase from any other manufacturer.

Selected Validation Data



mouse thymus tissue were subjected to SDS PAGE followed by western blot with 20469-1-AP (SLC37A2 antibody) at dilution of 1:500 incubated at room temperature for 1.5 hours.



Various lysates were subjected to SDS PAGE followed by western blot with 20469-1-AP (SLC37A2 antibody) at dilution of 1:1500 incubated at room temperature for 1.5 hours.