

For Research Use Only

C9orf156 Polyclonal antibody

Catalog Number: 20475-1-AP



Basic Information

Catalog Number: 20475-1-AP	GenBank Accession Number: BC002863	Purification Method: Antigen affinity purification
Size: 150ul , Concentration: 227 µg/ml by Bradford method using BSA as the standard;	GeneID (NCBI): 51531	Recommended Dilutions: WB 1:500-1:1000 IHC 1:20-1:200
Source: Rabbit	Full Name: chromosome 9 open reading frame 156	
Isotype: IgG	Calculated MW: 441 aa, 49 kDa	
Immunogen Catalog Number: AG14335	Observed MW: 48-55 kDa	

Applications

Tested Applications: IHC, WB, ELISA	Positive Controls: WB : HeLa cells, HepG2 cells, Jurkat cells IHC : human lung cancer tissue,
Species Specificity: human	
Note-IHC: suggested antigen retrieval with TE buffer pH 9.0; (*) Alternatively, antigen retrieval may be performed with citrate buffer pH 6.0	

Background Information

Storage

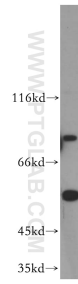
Storage:
Store at -20°C. Stable for one year after shipment.
Storage Buffer:
PBS with 0.02% sodium azide and 50% glycerol pH 7.3.
Aliquoting is unnecessary for -20°C storage

*** 20ul sizes contain 0.1% BSA

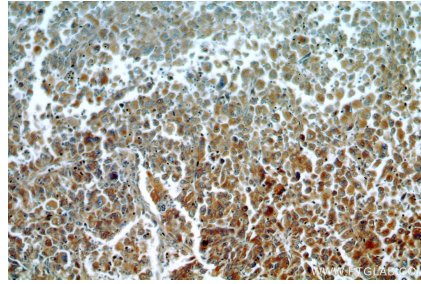
For technical support and original validation data for this product please contact:
T: 1 (888) 4PTGLAB (1-888-478-4522) (toll free in USA), or 1(312) 455-8498 (outside USA)
E: proteintech@ptglab.com
W: ptglab.com

This product is exclusively available under Proteintech Group brand and is not available to purchase from any other manufacturer.

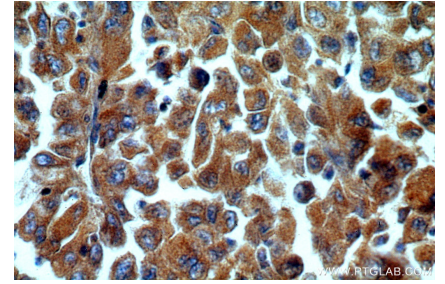
Selected Validation Data



HeLa cells were subjected to SDS PAGE followed by western blot with 20475-1-AP (C9orf156 antibody) at dilution of 1:300 incubated at room temperature for 1.5 hours.



Immunohistochemical analysis of paraffin-embedded human lung cancer using 20475-1-AP (C9orf156 antibody) at dilution of 1:50 (under 10x lens).



Immunohistochemical analysis of paraffin-embedded human lung cancer using 20475-1-AP (C9orf156 antibody) at dilution of 1:50 (under 40x lens).