

For Research Use Only

TMEM165 Polyclonal antibody

Catalog Number: 20485-1-AP **7 Publications**



Basic Information

Catalog Number: 20485-1-AP	GenBank Accession Number: BC003545	Purification Method: Antigen affinity purification
Size: 150ul, Concentration: 550 µg/ml by Nanodrop and 347 µg/ml by Bradford method using BSA as the standard;	GeneID (NCBI): 55858	Recommended Dilutions: WB 1:1000-1:6000 IP 0.5-4.0 ug for 1.0-3.0 mg of total protein lysate IF 1:200-1:800
Source: Rabbit	UNIPROT ID: Q9HC07	
Isotype: IgG	Full Name: transmembrane protein 165	
Immunogen Catalog Number: AG14362	Calculated MW: 324 aa, 35 kDa	
	Observed MW: 35-40 kDa	

Applications

Tested Applications: WB, IP, IF, ELISA	Positive Controls: WB : Jurkat cells, HeLa cells IP : HeLa cells, IF : HepG2 cells, Jurkat cells
Cited Applications: WB, IF, IHC	
Species Specificity: human, mouse, rat	
Cited Species: human, mouse	

Background Information

Thiopurine methyltransferase or thiopurine S-methyltransferase (TPMT), a member of methyltransferase superfamily, is an enzyme involved in the normal metabolic inactivation of thiopurine drugs such as azathioprine, 6-mercaptopurine and 6-thioguanine. These drugs are generally used as immunosuppressants or cytotoxic drugs and are prescribed for a variety of clinical conditions including leukemia, autoimmune disease and organ transplantation. Defects in the TPMT gene leads to decreased methylation and decreased inactivation of 6MP leading to enhanced bone marrow toxicity which may cause myelosuppression, anemia, bleeding tendency, leukopenia and infection.

Notable Publications

Author	Pubmed ID	Journal	Application
Jee-San Lee	30015898	Oncol Rep	WB
Timothy A Reinhardt	24530912	Biochem Biophys Res Commun	WB
Jiri Stribny	32047108	J Biol Chem	WB

Storage

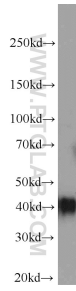
Storage:
Store at -20°C. Stable for one year after shipment.
Storage Buffer:
PBS with 0.02% sodium azide and 50% glycerol pH 7.3.
Aliquoting is unnecessary for -20°C storage

*** 20ul sizes contain 0.1% BSA

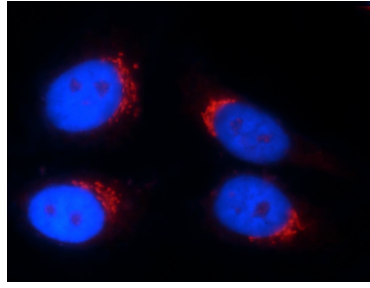
For technical support and original validation data for this product please contact:
T: 1 (888) 4PTGLAB (1-888-478-4522) (toll free in USA), or 1(312) 455-8498 (outside USA)
E: proteintech@ptglab.com
W: ptglab.com

This product is exclusively available under Proteintech Group brand and is not available to purchase from any other manufacturer.

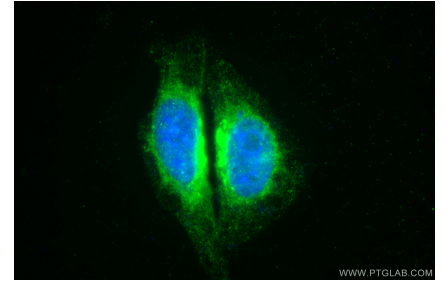
Selected Validation Data



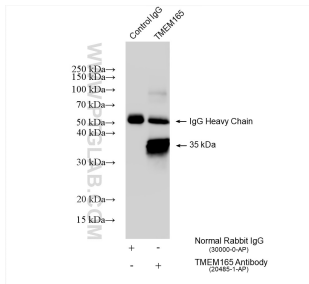
Jurkat cells were subjected to SDS PAGE followed by western blot with 20485-1-AP (TMEM165 antibody) at dilution of 1:3000 incubated at room temperature for 1.5 hours.



Immunofluorescent analysis of HepG2 cells using 20485-1-AP (TMEM165 antibody) at dilution of 1:100 and Rhodamine-labeled goat anti-rabbit IgG.



Immunofluorescent analysis of (4% PFA) fixed HepG2 cells using TMEM165 antibody (20485-1-AP) at dilution of 1:400 and CoraLite®488-Conjugated AffiniPure Goat Anti-Rabbit IgG(H+L) (SA00013-2).



IP result of anti-TMEM165 (IP:20485-1-AP, 4ug; Detection:20485-1-AP 1:1000) with HeLa cells lysate 1750 ug.