

For Research Use Only

# TMEM165 Polyclonal antibody, PBS Only

Catalog Number: 20485-1-PBS



## Basic Information

<b>Catalog Number:</b> 20485-1-PBS	<b>GenBank Accession Number:</b> BC003545	<b>Purification Method:</b> Antigen affinity purification
<b>Size:</b> 100ug , Concentration: 1 mg/ml by Nanodrop;	<b>GeneID (NCBI):</b> 55858	
<b>Source:</b> Rabbit	<b>UNIPROT ID:</b> Q9HC07	
<b>Isotype:</b> IgG	<b>Full Name:</b> transmembrane protein 165	
<b>Immunogen Catalog Number:</b> AG14362	<b>Calculated MW:</b> 324 aa, 35 kDa	
	<b>Observed MW:</b> 35-40 kDa	

## Applications

**Tested Applications:**  
WB, IF/ICC, IP, Indirect ELISA

**Species Specificity:**  
human, mouse, rat

## Background Information

TMEM165 is a putative divalent cation:proton antiporter that exchanges calcium or manganese ions for protons across the Golgi membrane. It mediates the reversible transport of calcium or manganese to the Golgi lumen driven by the proton gradient and possibly the membrane potential generated by V-ATPase, and provides calcium or manganese cofactors to resident Golgi enzymes and contributes to the maintenance of an acidic luminal Golgi pH required for proper functioning of the secretory pathway (PMID:22683087, 23569283, 27008884, 32047108). TMEM165 has two isoforms, with molecular weights of 28 kDa and 35 kDa respectively. It is also subject to ubiquitination modification, which may cause an increase in its molecular weight.

## Storage

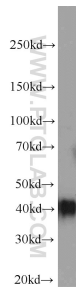
**Storage:**  
Store at -80°C.

**Storage Buffer:**  
PBS only, pH7.3

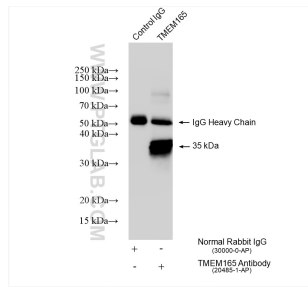
For technical support and original validation data for this product please contact:  
T: 1 (888) 4PTGLAB (1-888-478-4522) (toll free in USA), or 1(312) 455-8498 (outside USA)      E: proteintech@ptglab.com  
W: ptglab.com

**This product is exclusively available under Proteintech Group brand and is not available to purchase from any other manufacturer.**

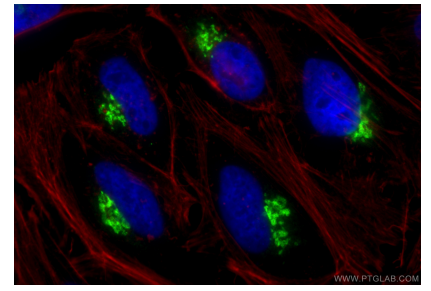
## Selected Validation Data



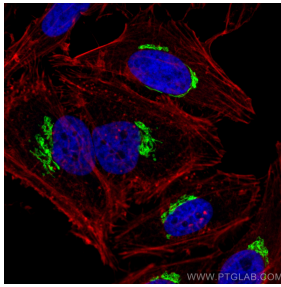
Jurkat cells were subjected to SDS PAGE followed by western blot with 20485-1-AP (TMEM165 antibody) at dilution of 1:3000 incubated at room temperature for 1.5 hours. This data was developed using the same antibody clone with 20485-1-PBS in a different storage buffer formulation.



IP result of anti-TMEM165 (IP:20485-1-AP, 4ug; Detection:20485-1-AP 1:1000) with HeLa cells lysate 1750 ug. This data was developed using the same antibody clone with 20485-1-PBS in a different storage buffer formulation.



Immunofluorescent analysis of (4% PFA) fixed HeLa cells using TMEM165 antibody (20485-1-AP) at dilution of 1:800 and Multi-rAb CoraLite® Plus 488-Goat Anti-Rabbit Recombinant Secondary Antibody (H+L) (RGAR002), CL594-phalloidin (red). This data was developed using the same antibody clone with 20485-1-PBS in a different storage buffer formulation.



Immunofluorescent analysis of (4% PFA) fixed HeLa cells using TMEM165 antibody (20485-1-AP) at dilution of 1:200 and CoraLite®488-Conjugated Goat Anti-Rabbit IgG(H+L) (SA00013-2), CoraLite®594-Phalloidin (red). This data was developed using the same antibody clone with 20485-1-PBS in a different storage buffer formulation.