

For Research Use Only

RAE1 Polyclonal antibody, PBS Only

Catalog Number:20491-1-PBS



Basic Information

Catalog Number:

20491-1-PBS

Size:

100ug , Concentration: 1 mg/ml by Nanodrop;

Source:

Rabbit

Isotype:

IgG

Immunogen Catalog Number:

AG12102

GenBank Accession Number:

BC103754

GeneID (NCBI):

8480

UNIPROT ID:

P78406

Full Name:

RAE1 RNA export 1 homolog (S. pombe)

Calculated MW:

368 aa, 41 kDa

Observed MW:

41 kDa

Purification Method:

Antigen affinity purification

Applications

Tested Applications:

WB, IHC, IF/ICC, Indirect ELISA

Species Specificity:

human

Background Information

RAE1 acts as a mRNA export factor involved in nucleocytoplasmic transport, it plays a role in mitotic bipolar spindle formation. (PMID: 33849972, MID: 17172455)

Storage

Storage:

Store at -80°C.

Storage Buffer:

PBS only, pH7.3

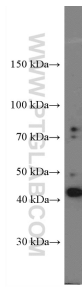
For technical support and original validation data for this product please contact:

T: 1 (888) 4PTGLAB (1-888-478-4522) (toll free in USA), or 1(312) 455-8498 (outside USA)

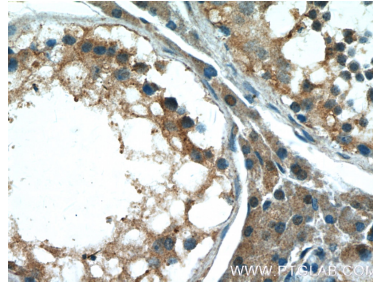
E: proteintech@ptglab.com
W: ptglab.com

This product is exclusively available under Proteintech Group brand and is not available to purchase from any other manufacturer.

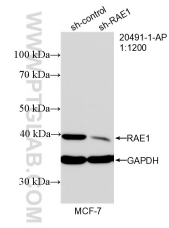
Selected Validation Data



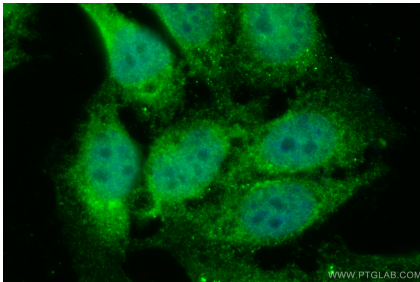
BxPC-3 cells were subjected to SDS PAGE followed by western blot with 20491-1-AP (RAE1 Antibody) at dilution of 1:1000 incubated at room temperature for 1.5 hours. This data was developed using the same antibody clone with 20491-1-PBS in a different storage buffer formulation.



Immunohistochemical analysis of paraffin-embedded human testis tissue slide using 20491-1-AP (RAE1 Antibody) at dilution of 1:200 (under 40x lens). This data was developed using the same antibody clone with 20491-1-PBS in a different storage buffer formulation.



WB result of RAE1 antibody (20491-1-AP; 1:1200; incubated at room temperature for 1.5 hours) with sh-Control and sh-RAE1 transfected MCF-7 cells. This data was developed using the same antibody clone with 20491-1-PBS in a different storage buffer formulation.



Immunofluorescent analysis of (4% PFA) fixed HepG2 cells using RAE1 antibody (20491-1-AP) at dilution of 1:400 and CoralLite® 488-Conjugated AffiniPure Goat Anti-Rabbit IgG(H+L) (SA00013-2). This data was developed using the same antibody clone with 20491-1-PBS in a different storage buffer formulation.