

NME2 Polyclonal antibody

Catalog Number: 20493-1-AP

3 Publications

Basic Information

Catalog Number: 20493-1-AP	GenBank Accession Number: BC002476	Purification Method: Antigen affinity purification
Size: 150ul , Concentration: 173 µg/ml by Bradford method using BSA as the standard;	GeneID (NCBI): 4831	Recommended Dilutions: WB 1:500-1:1000 IHC 1:50-1:500 IF 1:50-1:500
Source: Rabbit	Full Name: non-metastatic cells 2, protein (NM23B) expressed in	
Isotype: IgG	Calculated MW: 152 aa, 17 kDa	
Immunogen Catalog Number: AG13913	Observed MW: 17 kDa	

Applications

Tested Applications: IF, IHC, WB, ELISA	Positive Controls:
Cited Applications: WB	WB : mouse kidney tissue, Jurkat cells, mouse liver tissue
Species Specificity: human, mouse, rat	IHC : mouse kidney tissue,
Cited Species: human, mouse, rat	IF : HEK-293 cells,
Note-IHC: suggested antigen retrieval with TE buffer pH 9.0; (*) Alternatively, antigen retrieval may be performed with citrate buffer pH 6.0	

Background Information

NME2(non-metastatic cells 2, protein) is also named as NDKB(Nucleoside diphosphate kinase B), NM23B and belongs to the NDK family. It is involved in the phosphorylation of nucleoside diphosphates and interacts with membrane receptor and constituting a novel molecular regulatory mechanism of GPCR endocytosis. This protein has 2 isoforms produced by alternative splicing.

Notable Publications

Author	Pubmed ID	Journal	Application
Yunqi Gu	26972251	Biochem Biophys Res Commun	WB
Yang Lu	25103794	Proteomics	WB
Ye Zhu	35427968	J Hazard Mater	WB

Storage

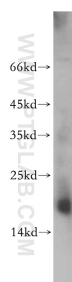
Storage:
Store at -20°C. Stable for one year after shipment.
Storage Buffer:
PBS with 0.02% sodium azide and 50% glycerol pH 7.3.
Aliquoting is unnecessary for -20°C storage

*** 20ul sizes contain 0.1% BSA

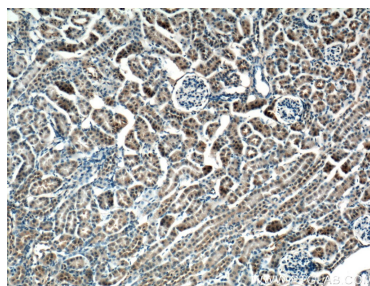
For technical support and original validation data for this product please contact:
T: 1 (888) 4PTGLAB (1-888-478-4522) (toll free in USA), or 1(312) 455-8498 (outside USA)
E: proteintech@ptglab.com
W: ptglab.com

This product is exclusively available under Proteintech Group brand and is not available to purchase from any other manufacturer.

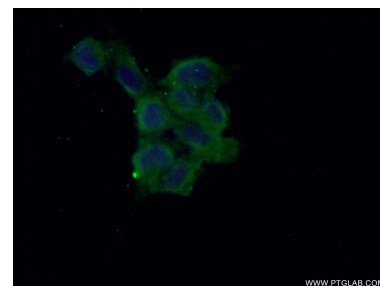
Selected Validation Data



mouse kidney tissue were subjected to SDS PAGE followed by western blot with 20493-1-AP (NME2 antibody) at dilution of 1:200 incubated at room temperature for 1.5 hours.



Immunohistochemical analysis of paraffin-embedded mouse kidney tissue slide using 20493-1-AP (NME2 Antibody) at dilution of 1:200 (under 10x lens). Heat mediated antigen retrieval with Tris-EDTA buffer (pH 9.0).



Immunofluorescent analysis of (10% Formaldehyde) fixed HEK-293 cells using 20493-1-AP (NME2 antibody) at dilution of 1:50 and Alexa Fluor 488-conjugated AffiniPure Goat Anti-Rabbit IgG(H+L).