

For Research Use Only

CEPT1 Polyclonal antibody

Catalog Number: 20496-1-AP

Featured Product

9 Publications



Basic Information

Catalog Number:

20496-1-AP

Size:

150ul, Concentration: 1000 ug/ml by Nanodrop and 400 ug/ml by Bradford method using BSA as the standard;

Source:

Rabbit

Isotype:

IgG

Immunogen Catalog Number:

AG14140

GenBank Accession Number:

BC032610

GeneID (NCBI):

10390

UNIPROT ID:

Q9Y6K0

Full Name:

choline/ethanolamine phosphotransferase 1

Calculated MW:

416 aa, 47 kDa

Purification Method:

Antigen affinity purification

Recommended Dilutions:

IHC 1:50-1:500

IF/ICC 1:10-1:100

Applications

Tested Applications:

IHC, IF/ICC, ELISA

Cited Applications:

WB, IF

Species Specificity:

human, mouse, rat

Cited Species:

human, mouse

Note-IHC: suggested antigen retrieval with TE buffer pH 9.0; (*) Alternatively, antigen retrieval may be performed with citrate buffer pH 6.0

Positive Controls:

IHC : mouse liver tissue, human pancreas tissue, human cervical cancer tissue

IF/ICC : HepG2 cells,

Notable Publications

Author	Pubmed ID	Journal	Application
Mohamed A Zayed	33214136	Diabetes	WB,IF
Shuhua Shan	32657580	J Agric Food Chem	WB
Pengli Zheng	30030520	Cell Res	WB

Storage

Storage:

Store at -20°C. Stable for one year after shipment.

Storage Buffer:

PBS with 0.02% sodium azide and 50% glycerol pH 7.3.

Aliquoting is unnecessary for -20°C storage

*** 20ul sizes contain 0.1% BSA

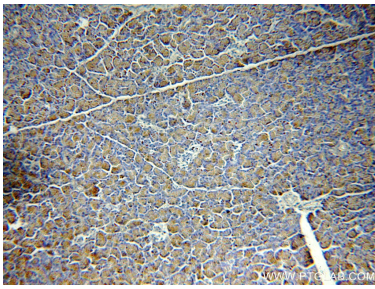
For technical support and original validation data for this product please contact:

T: 1 (888) 4PTGLAB (1-888-478-4522) (toll free in USA), or 1(312) 455-8498 (outside USA)

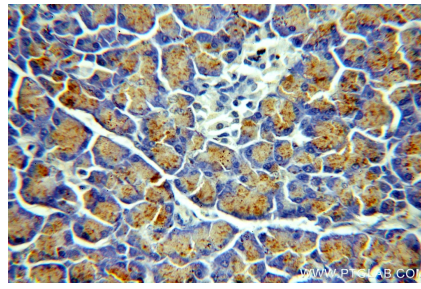
E: proteintech@ptglab.com
W: ptglab.com

This product is exclusively available under Proteintech Group brand and is not available to purchase from any other manufacturer.

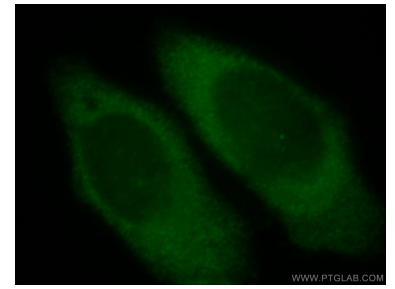
Selected Validation Data



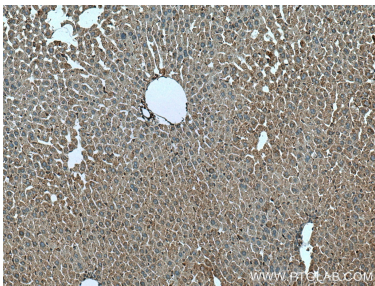
Immunohistochemical analysis of paraffin-embedded human pancreas using 20496-1-AP (CEPT1 antibody) at dilution of 1:50 (under 10x lens).



Immunohistochemical analysis of paraffin-embedded human pancreas using 20496-1-AP (CEPT1 antibody) at dilution of 1:50 (under 40x lens).



Immunofluorescent analysis of HepG2 cells, using CEPT1 antibody 20496-1-AP at 1:25 dilution and FITC-labeled goat anti-Rabbit IgG (green).



Immunohistochemical analysis of paraffin-embedded mouse liver tissue slide using 20496-1-AP (CEPT1 antibody) at dilution of 1:200 (under 10x lens). Heat mediated antigen retrieval with Tris-EDTA buffer (pH 9.0).